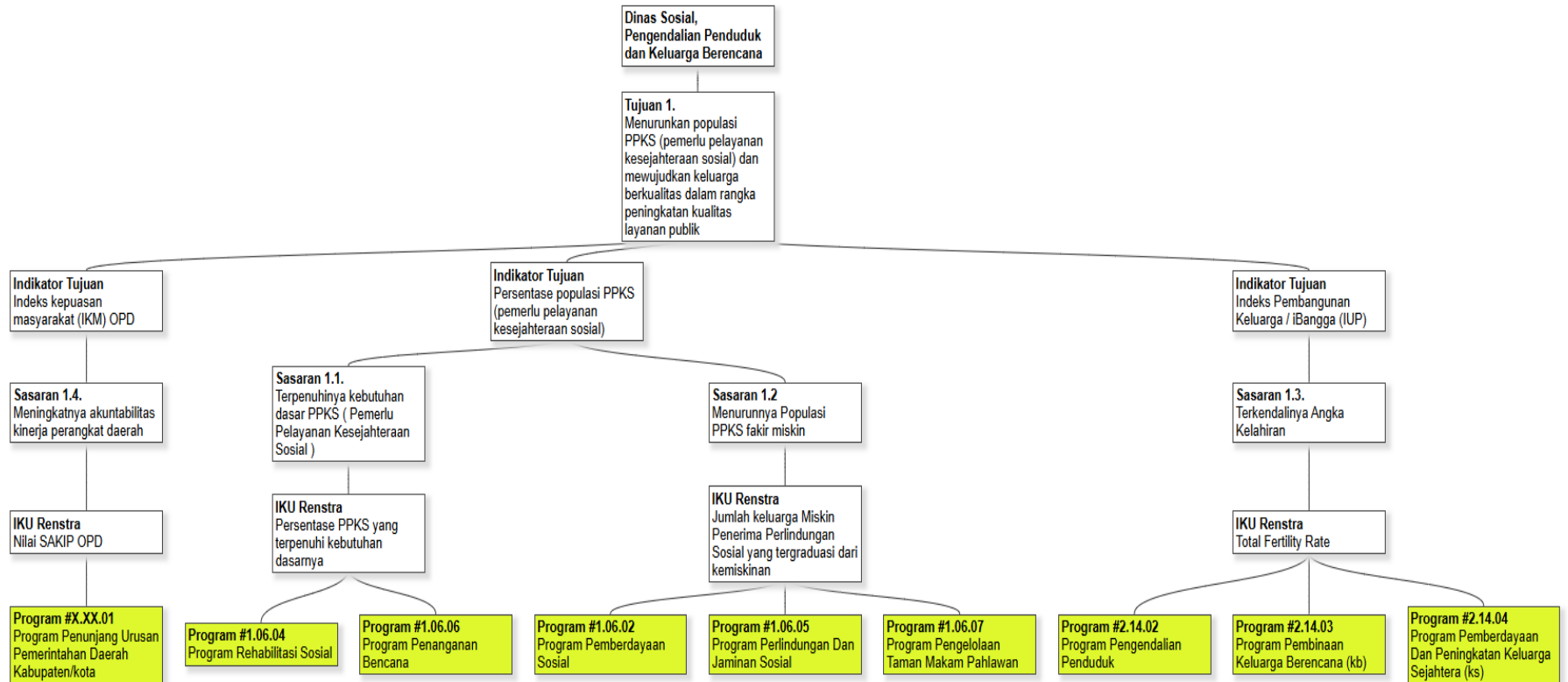
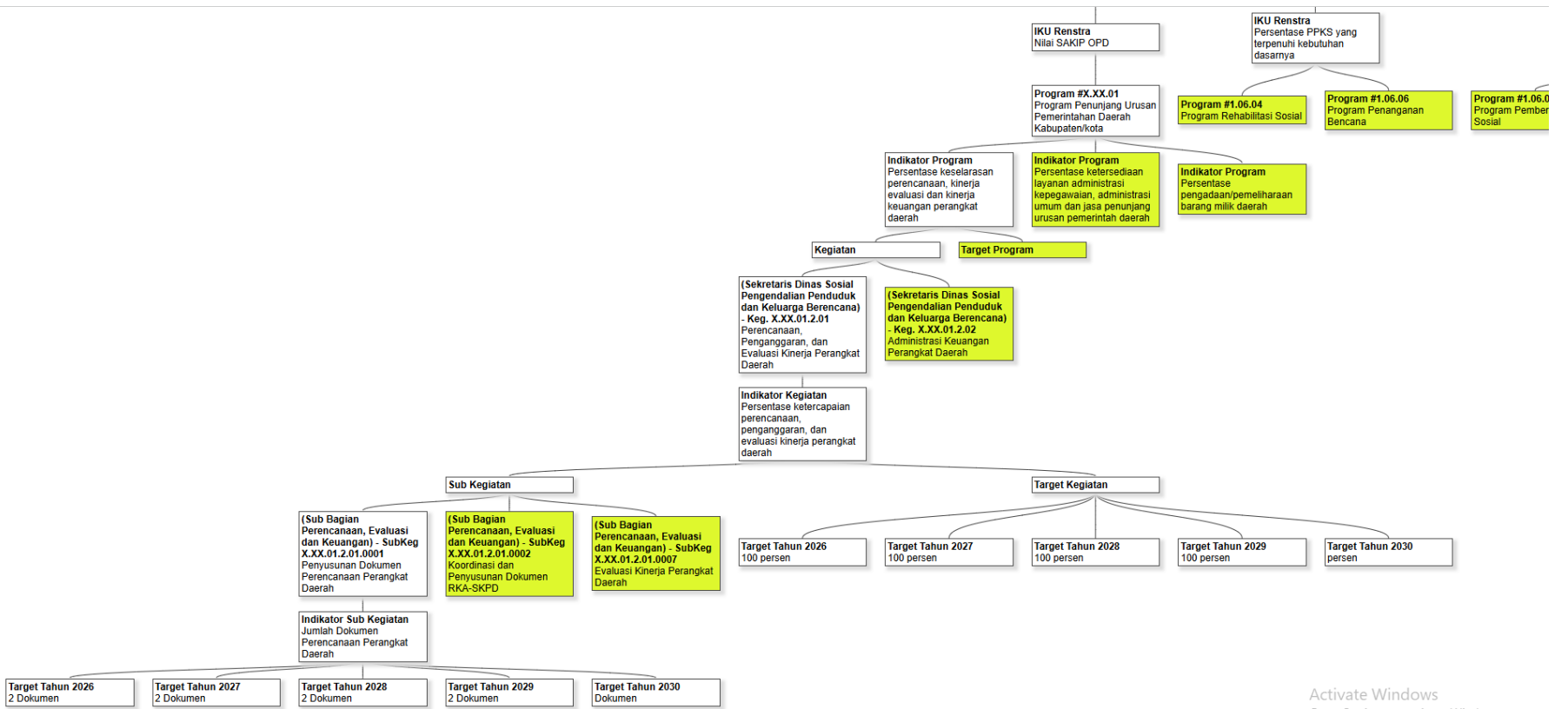
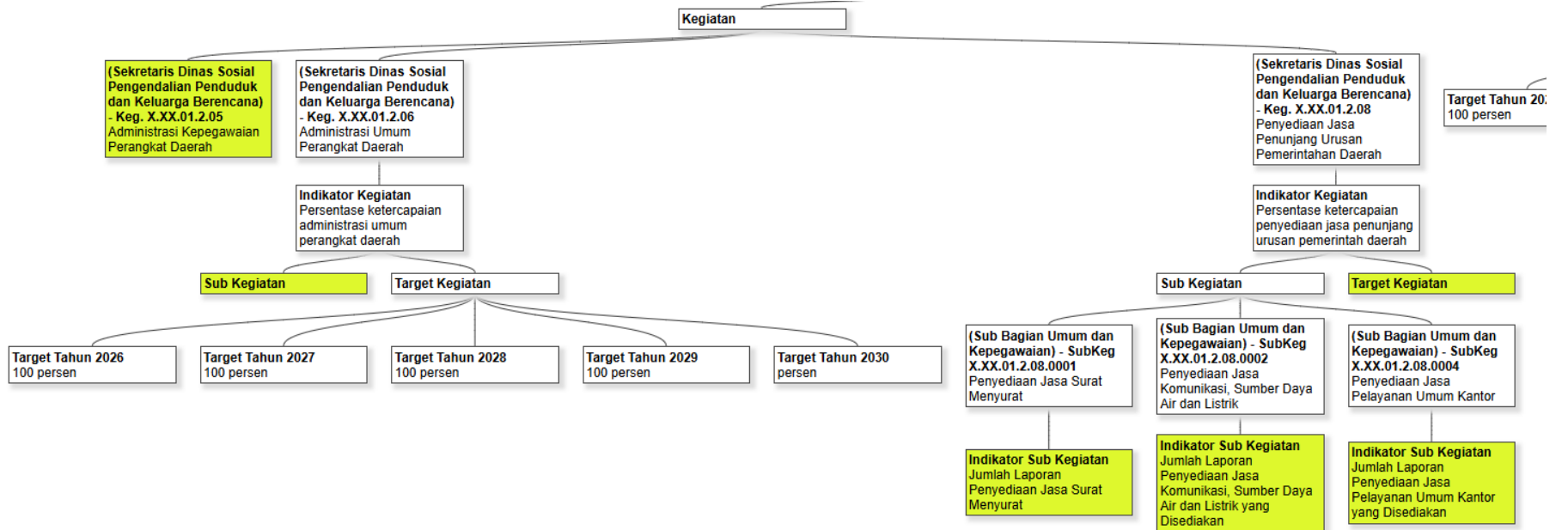
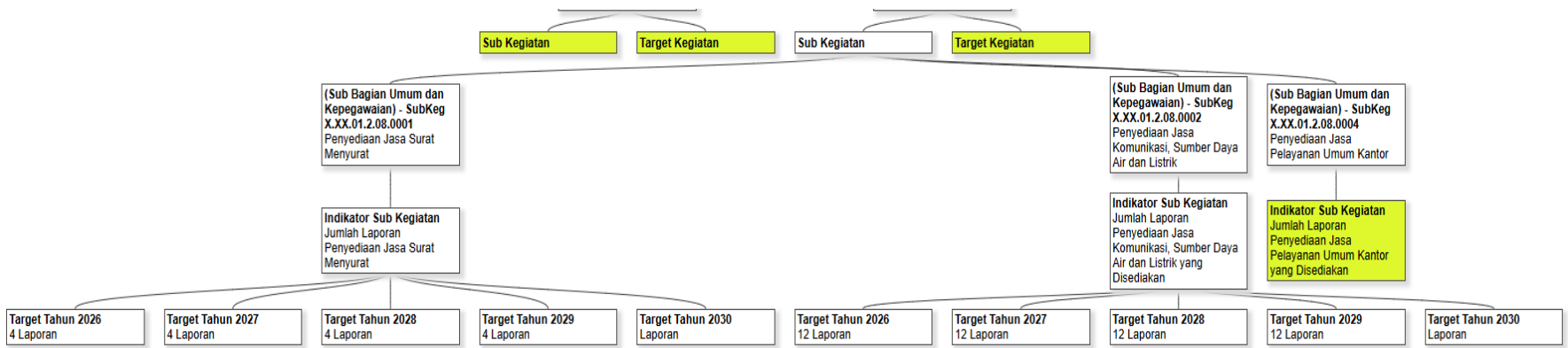


CASCADING DINSOS P2KB

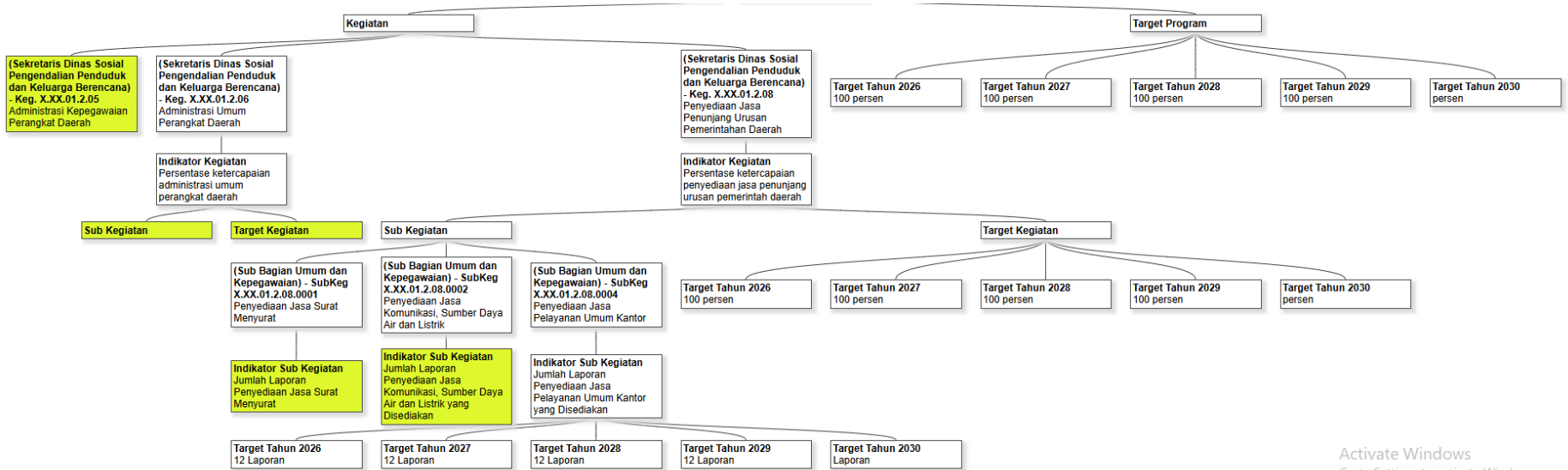




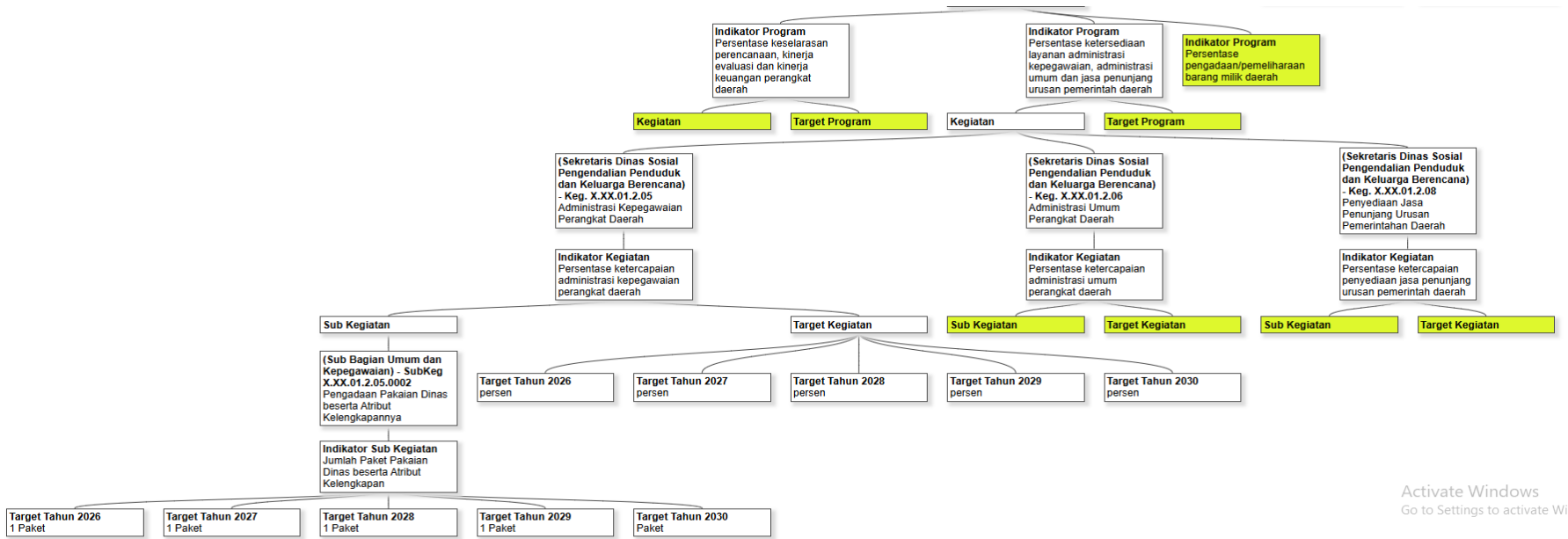




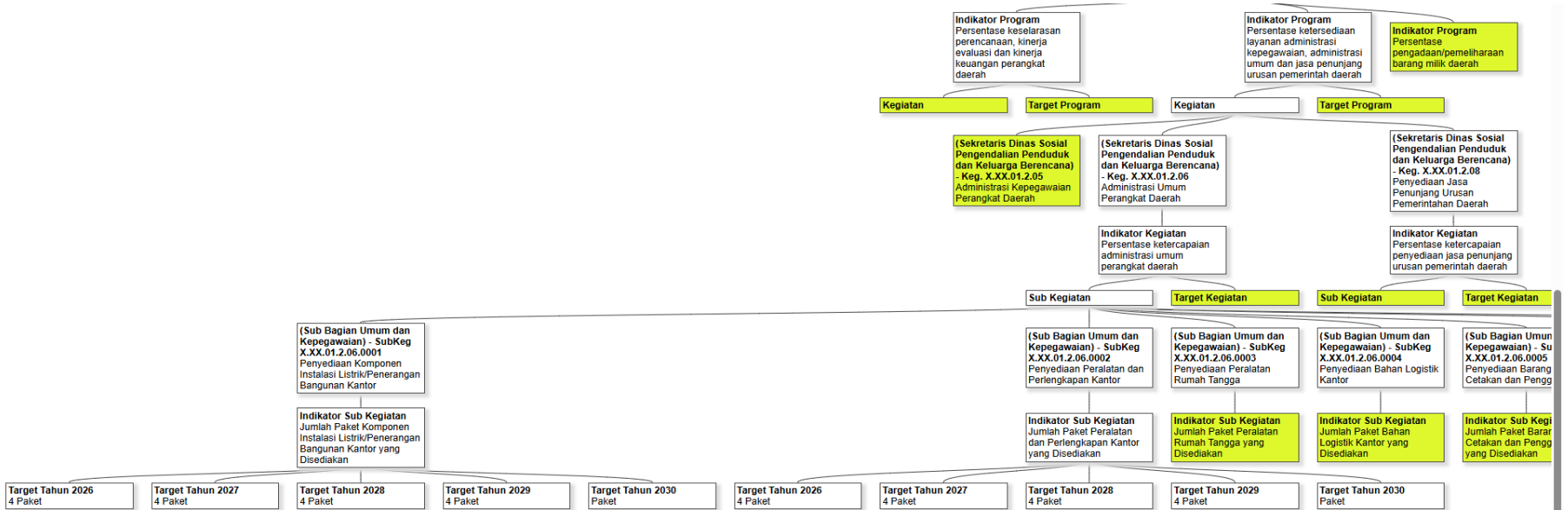
Activate Windows

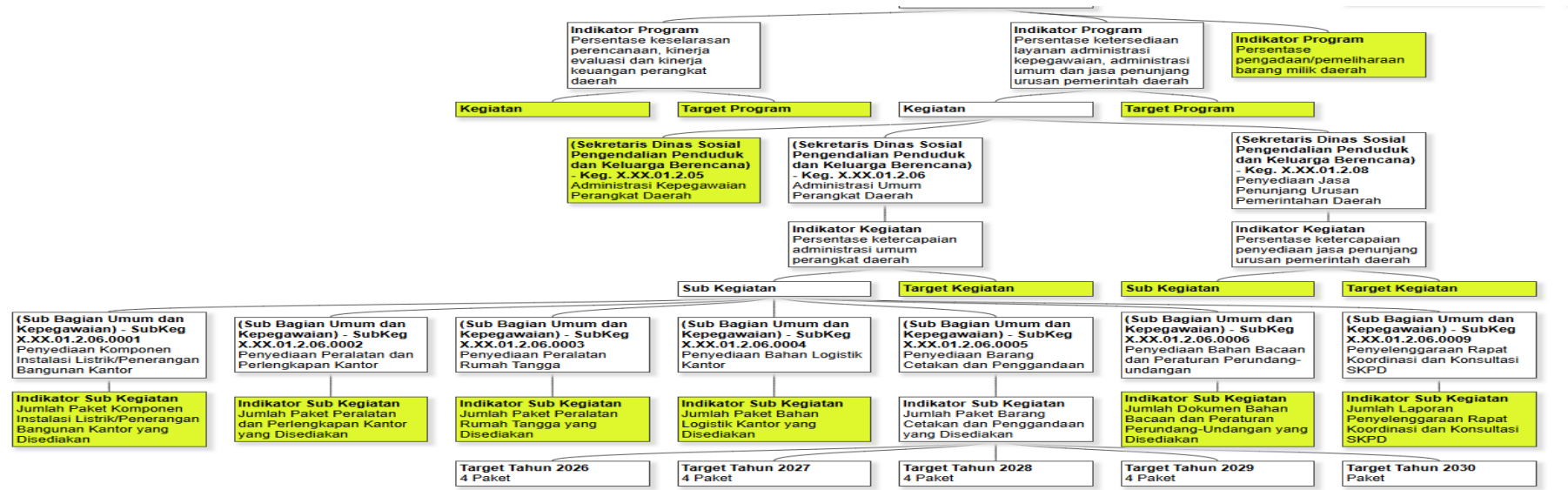
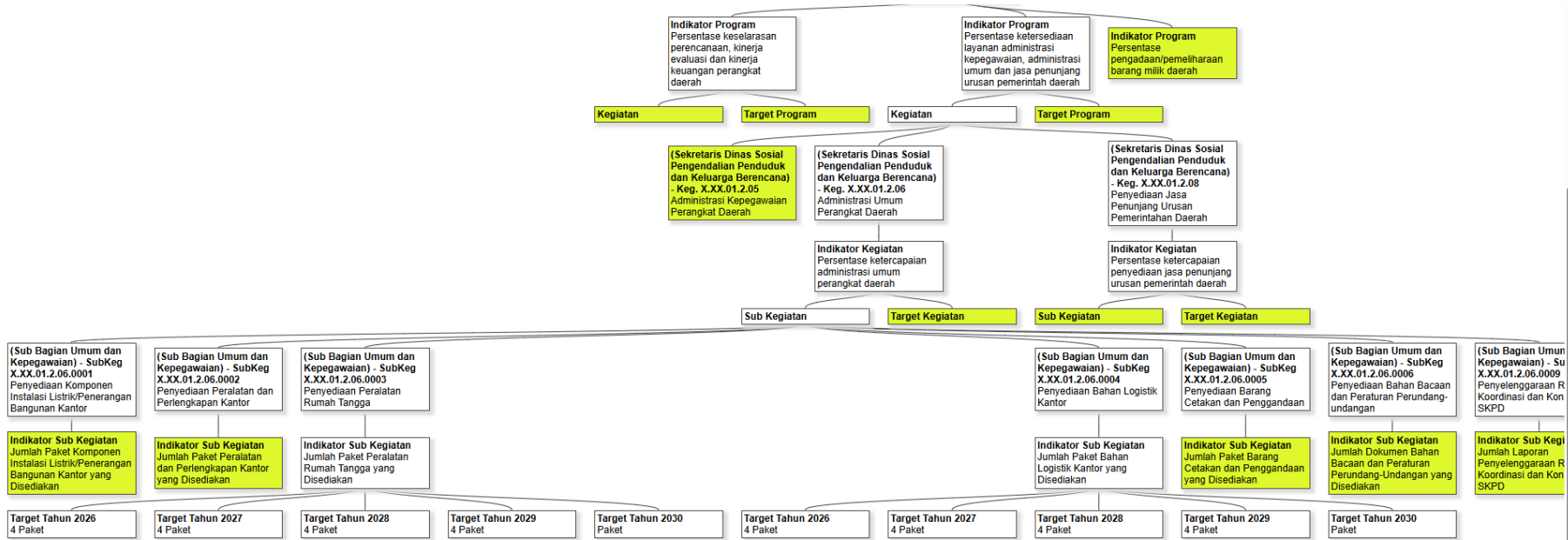


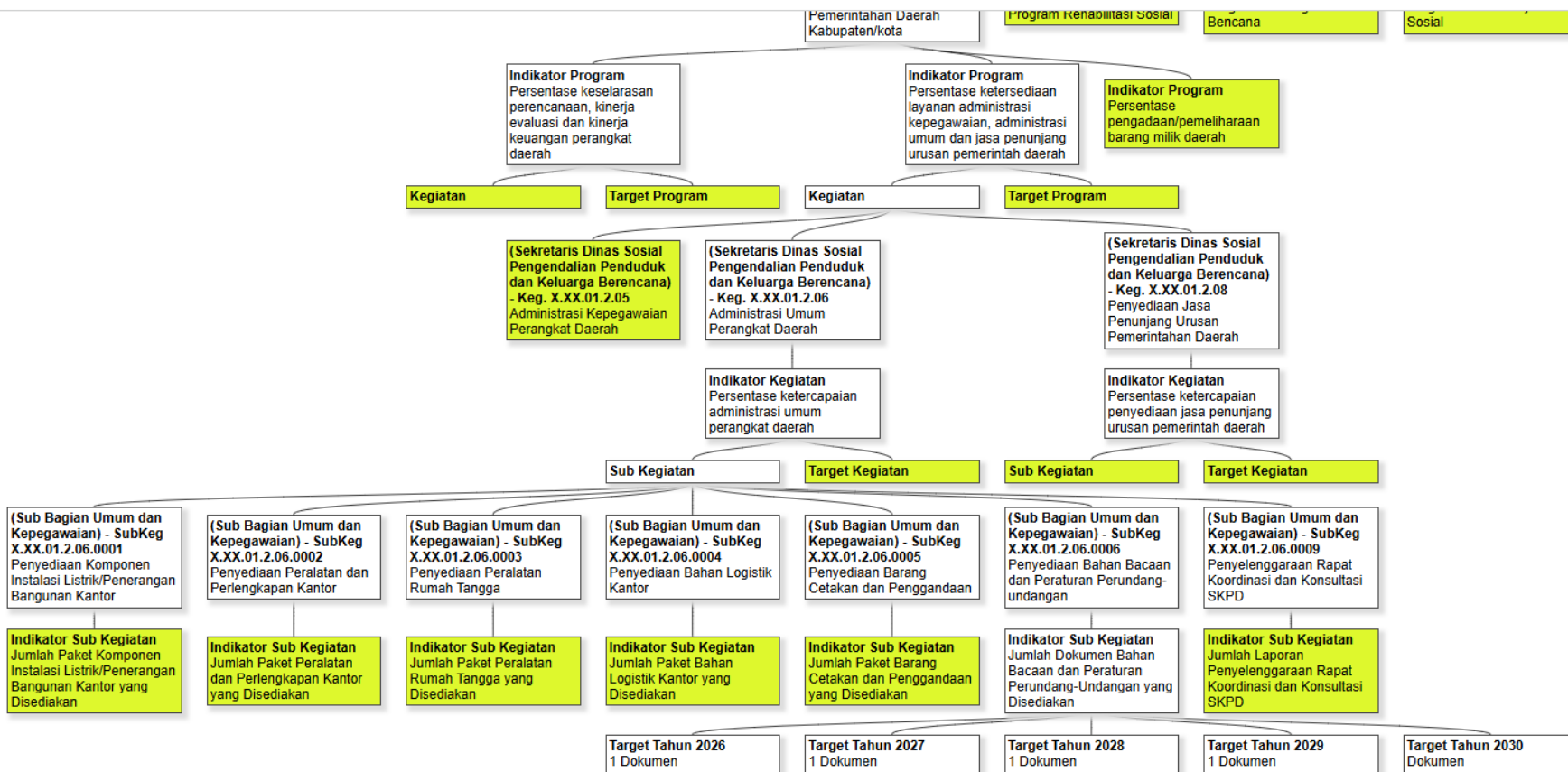
Activate Windows
Go to Settings to activate Windows.

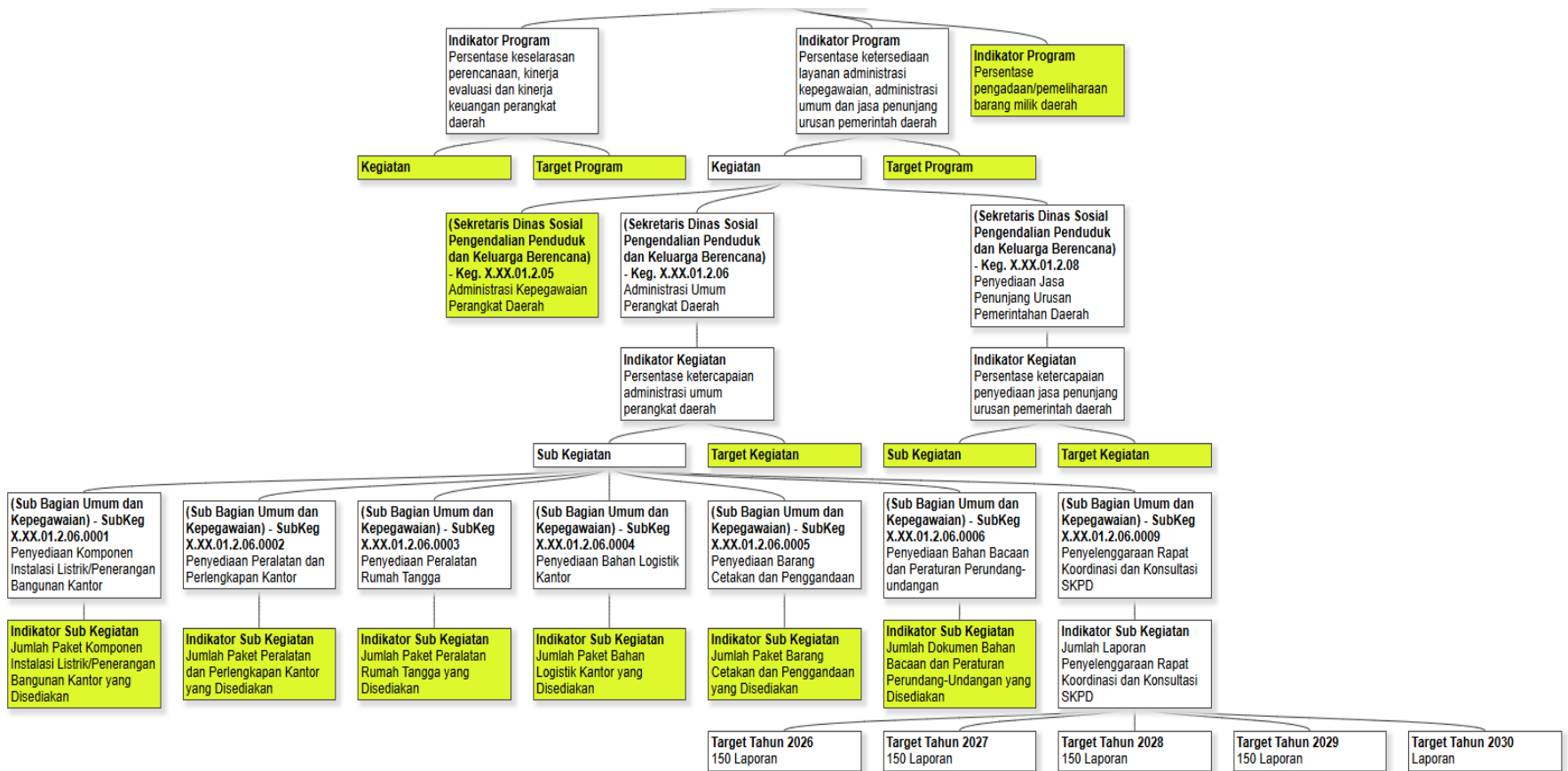


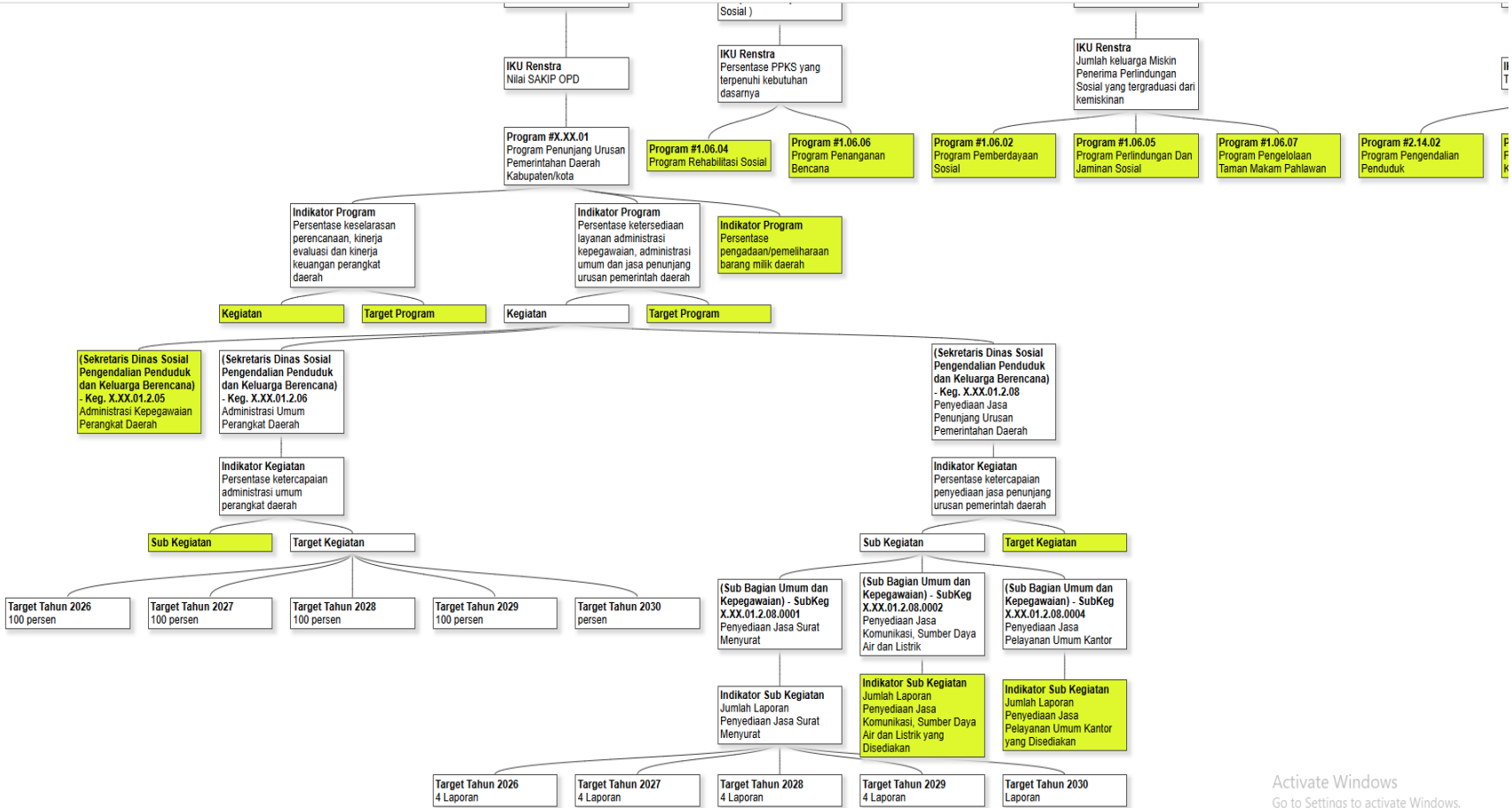
Activate Windows
Go to Settings to activate Wi

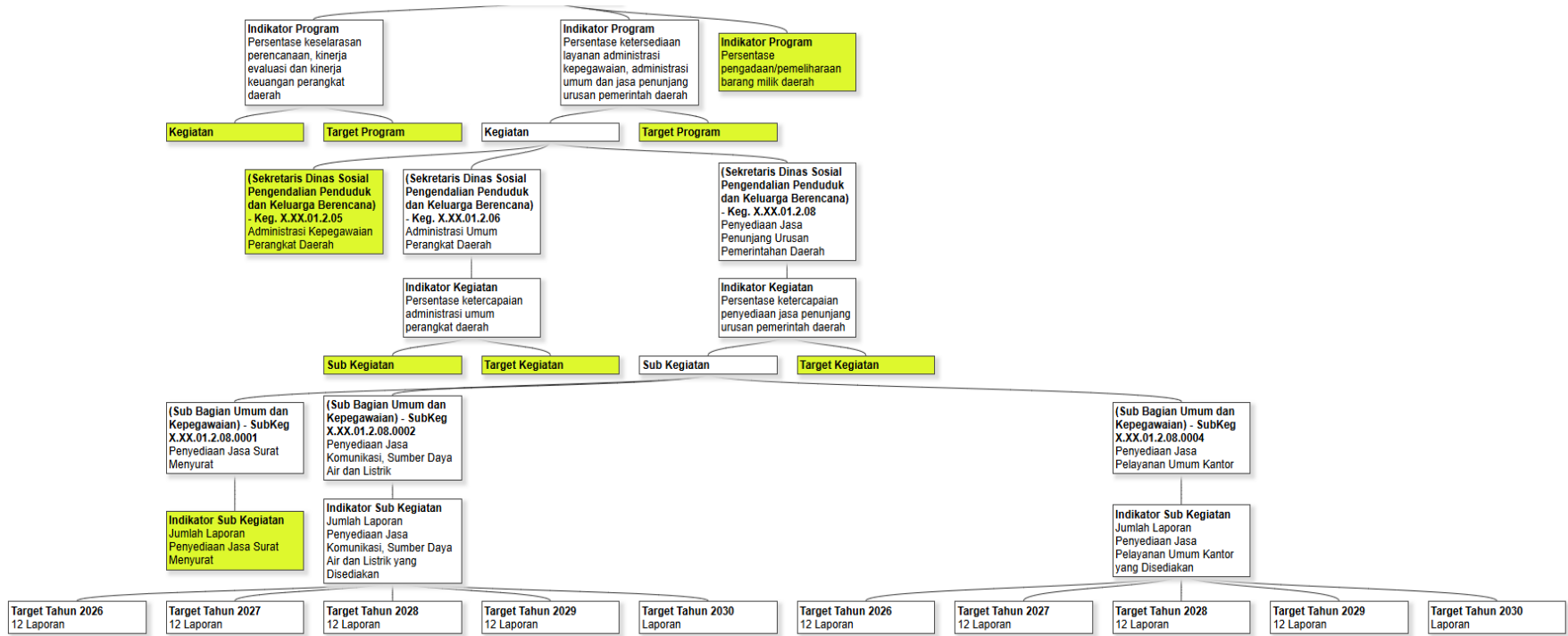


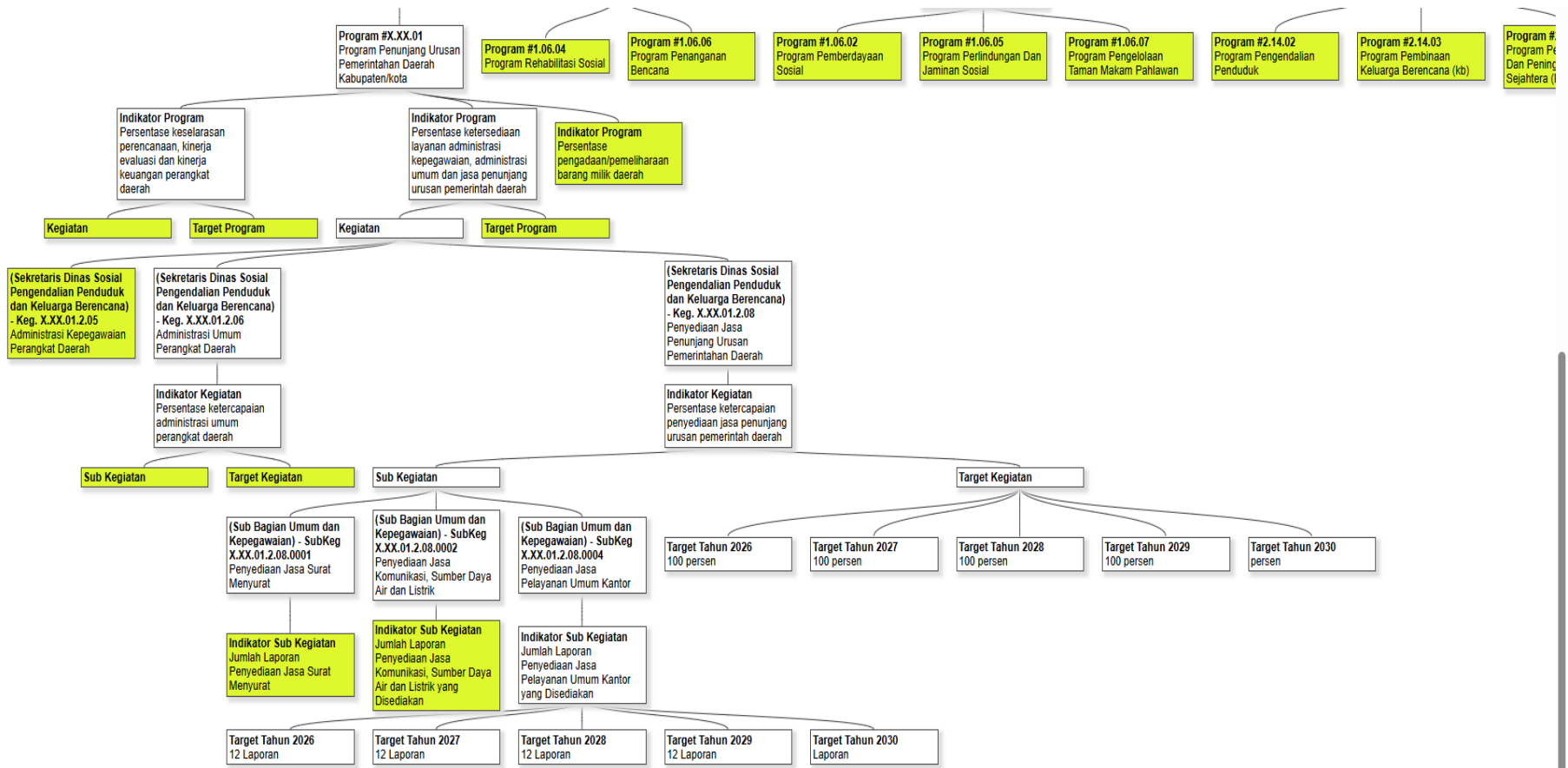


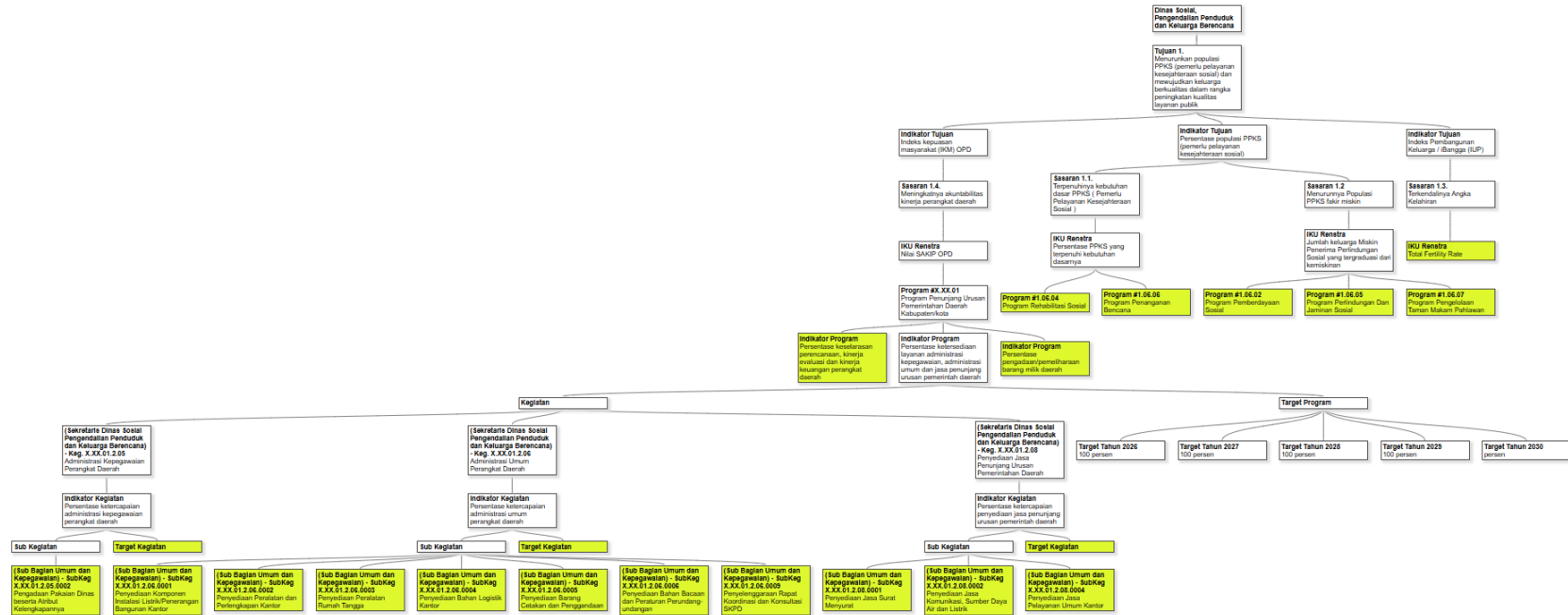




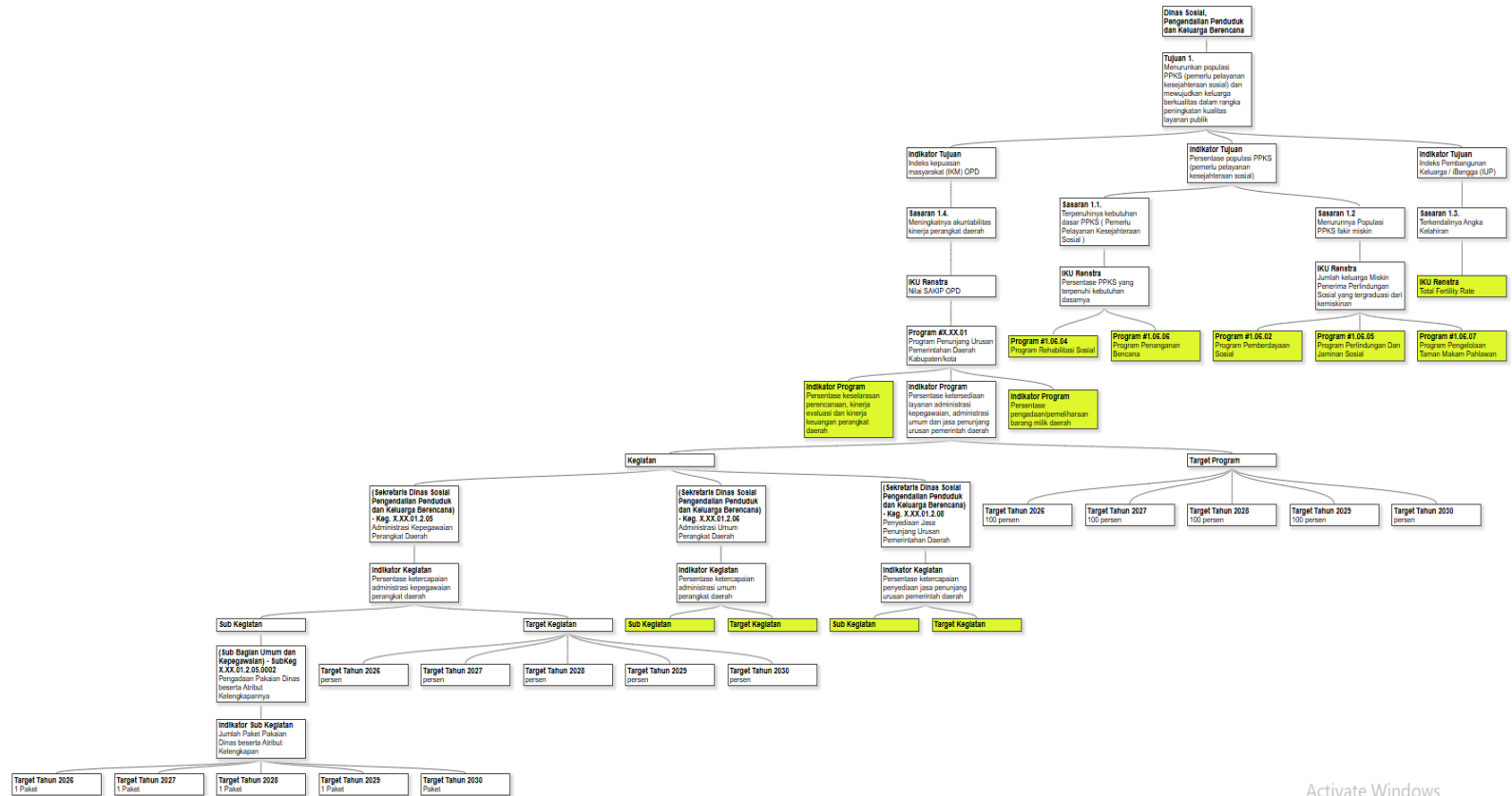




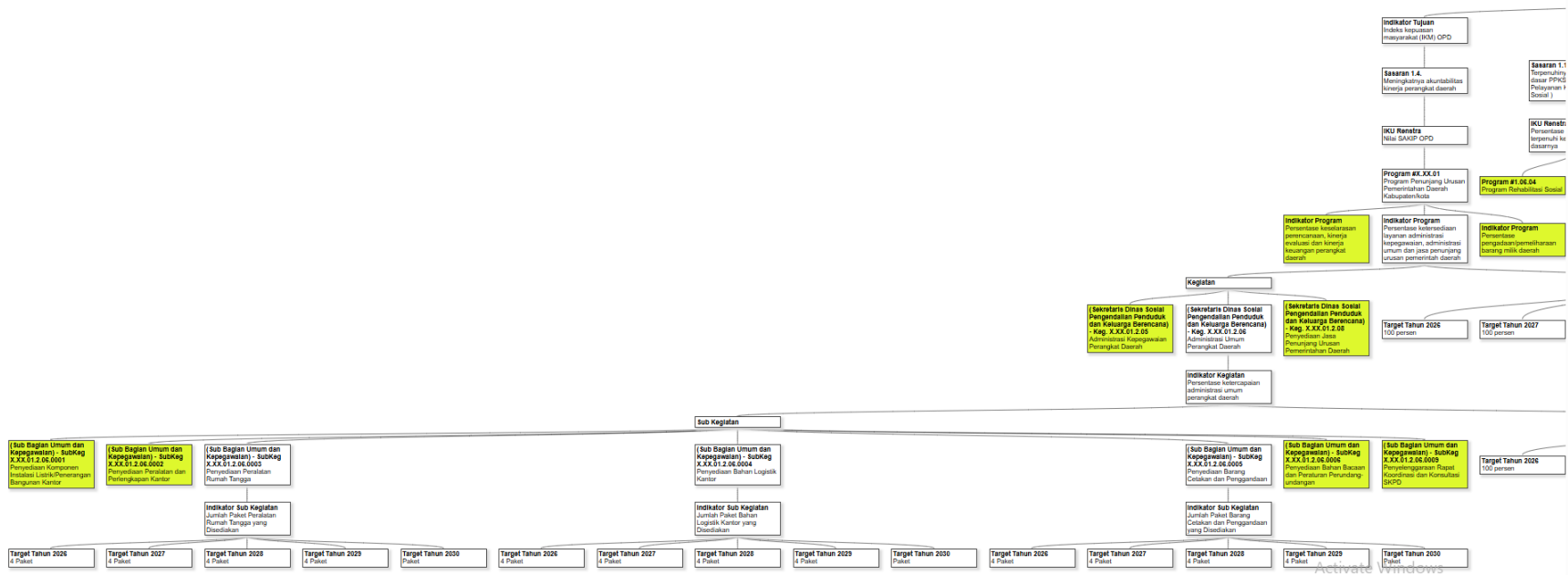




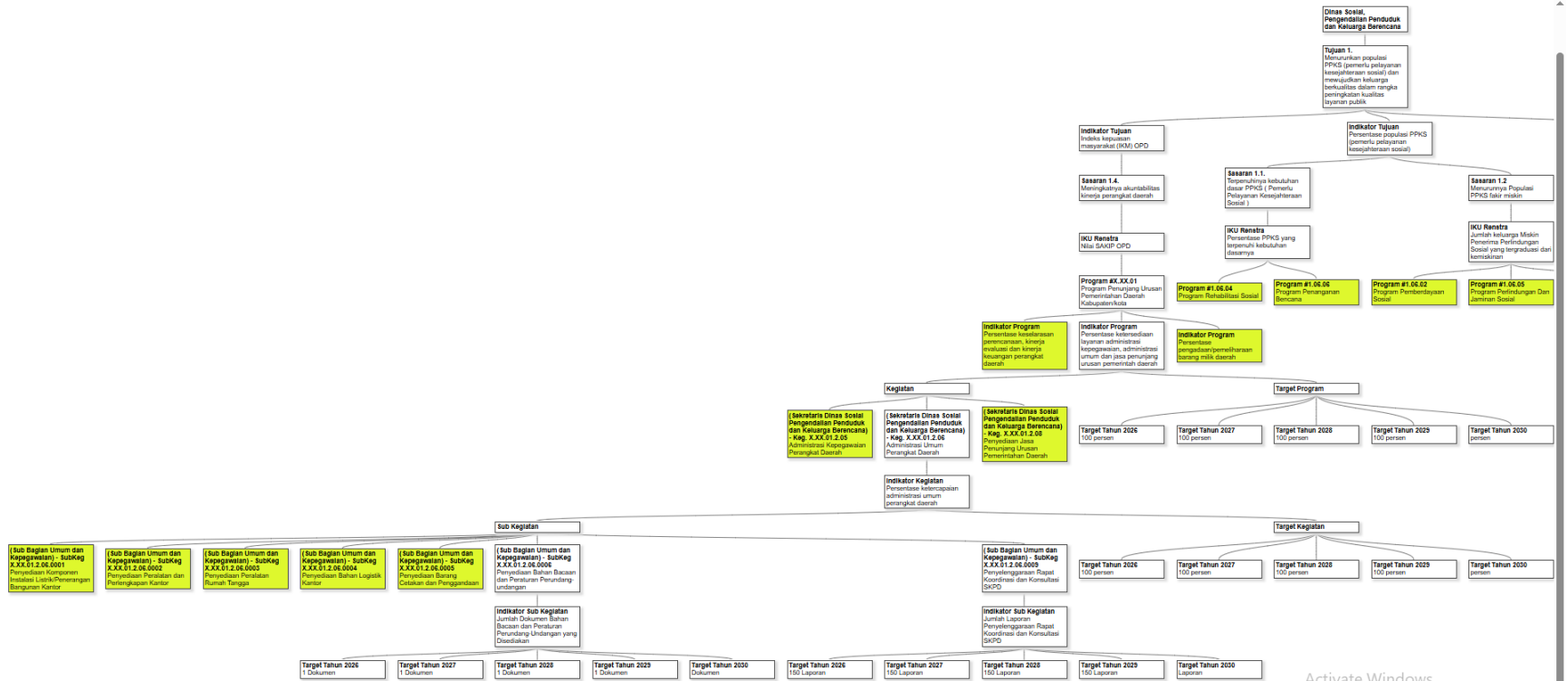
Activate Windows
Go to Settings to activate Windows.



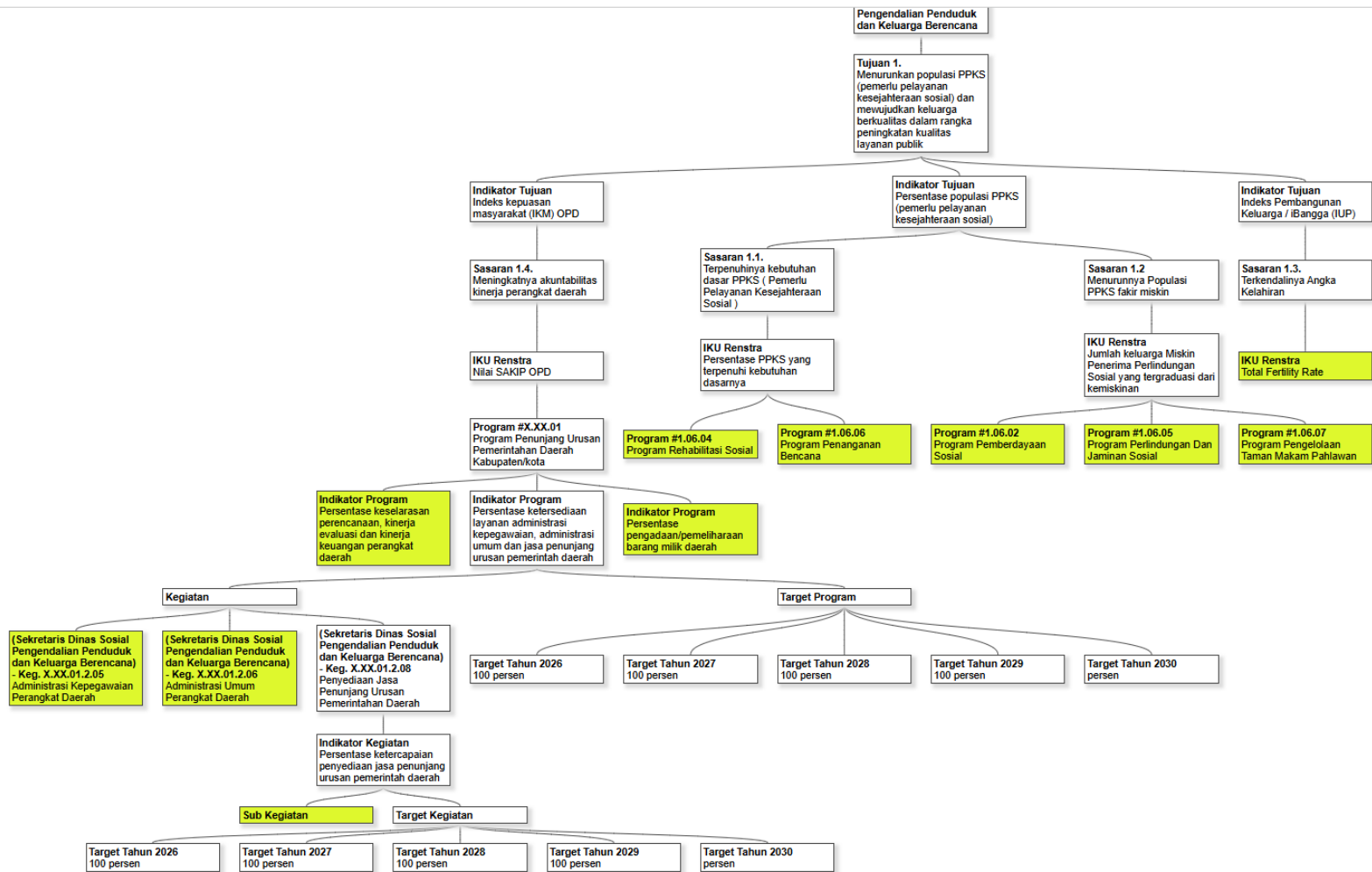
Activate Windows
Go to Settings to activate Windows.

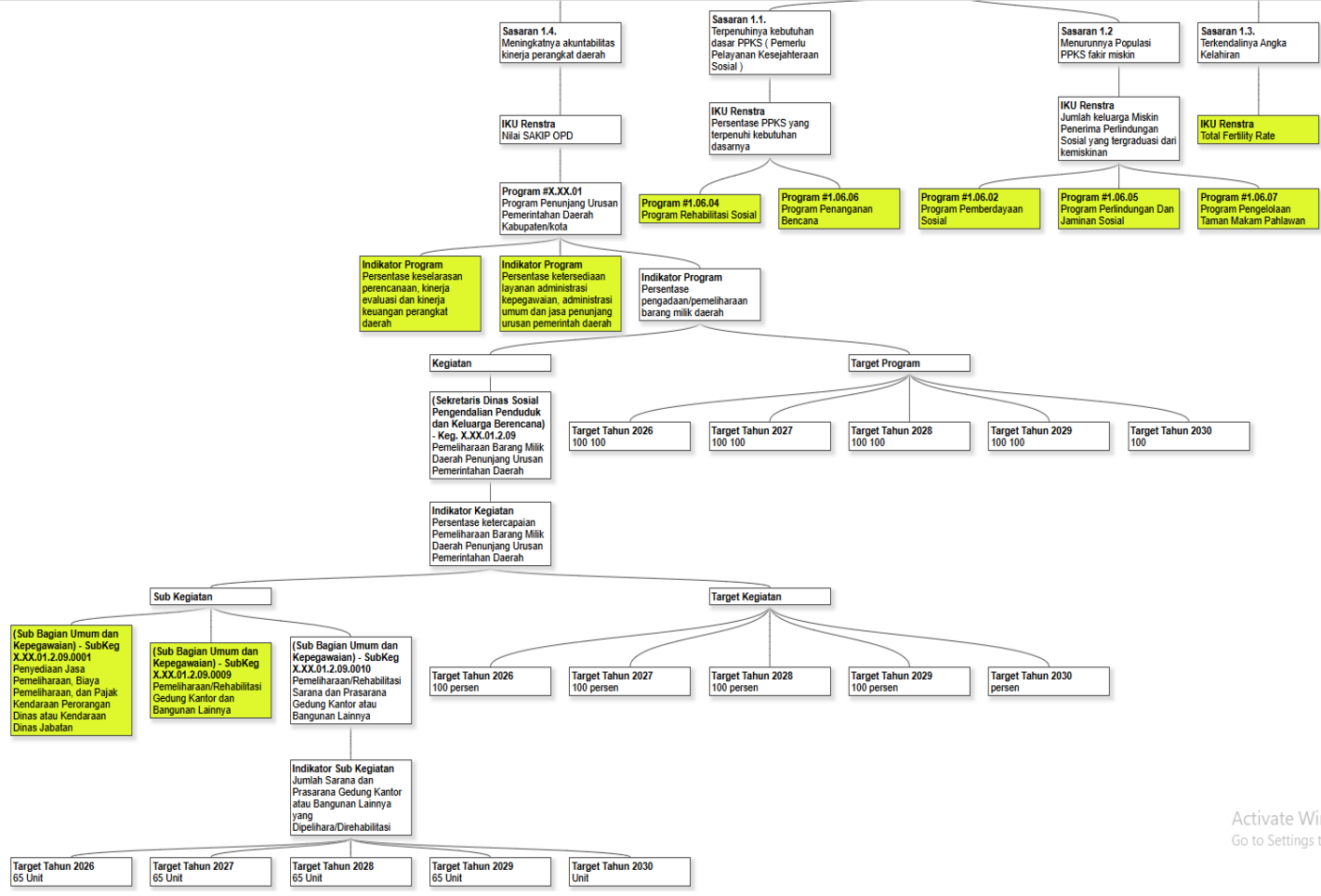


Activate Windows
Go to Settings to activate Windows.



Activate Windows
Go to Settings to activate Windows.





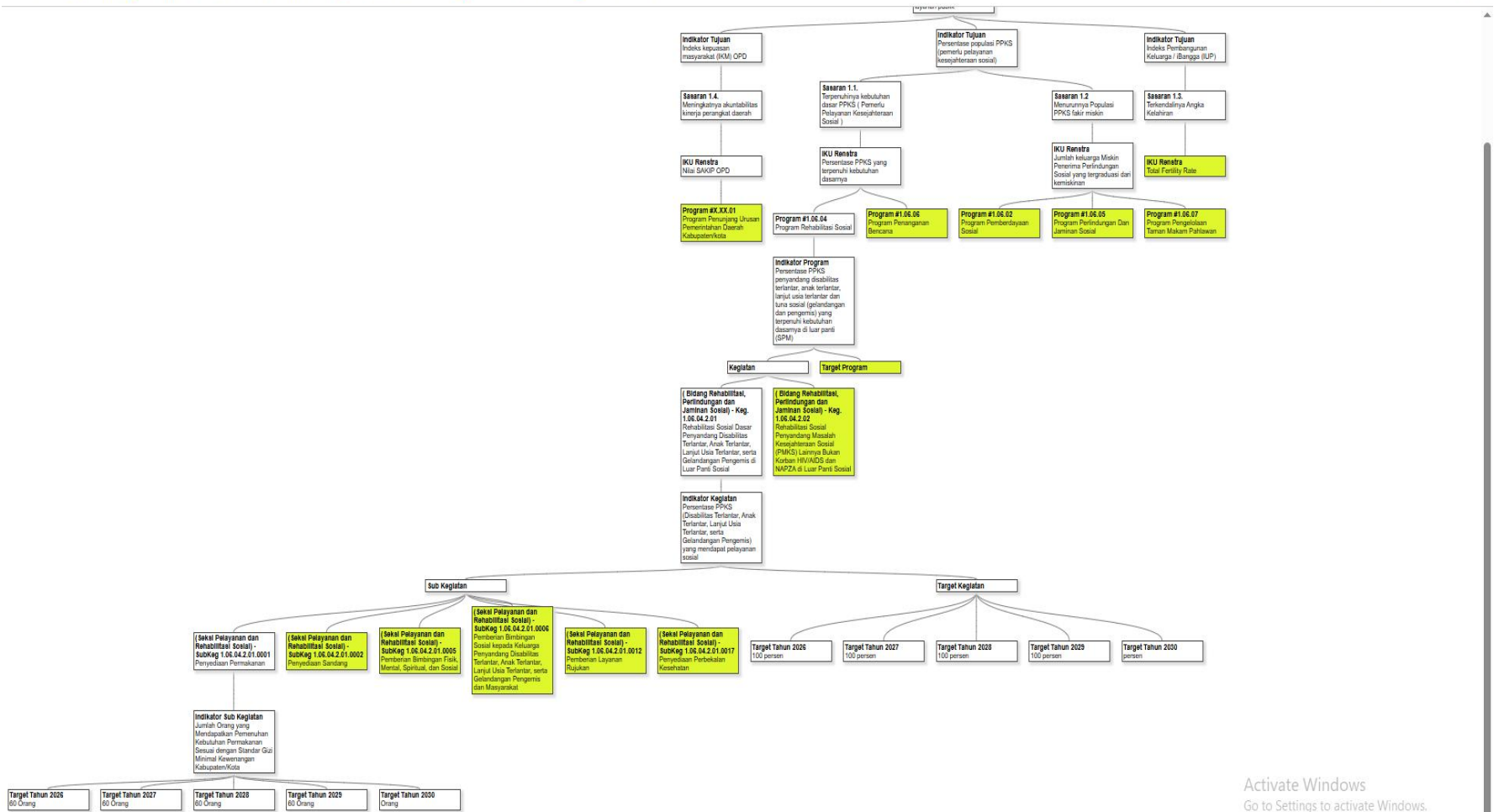
Activate Windows
Go to Settings to activate Windows.

Sub Kegiatan Permakanan

← → ↻ 🌐 cascadingkinerja.pekalongankota.go.id/cascadtreeview/view_cascad_full.php

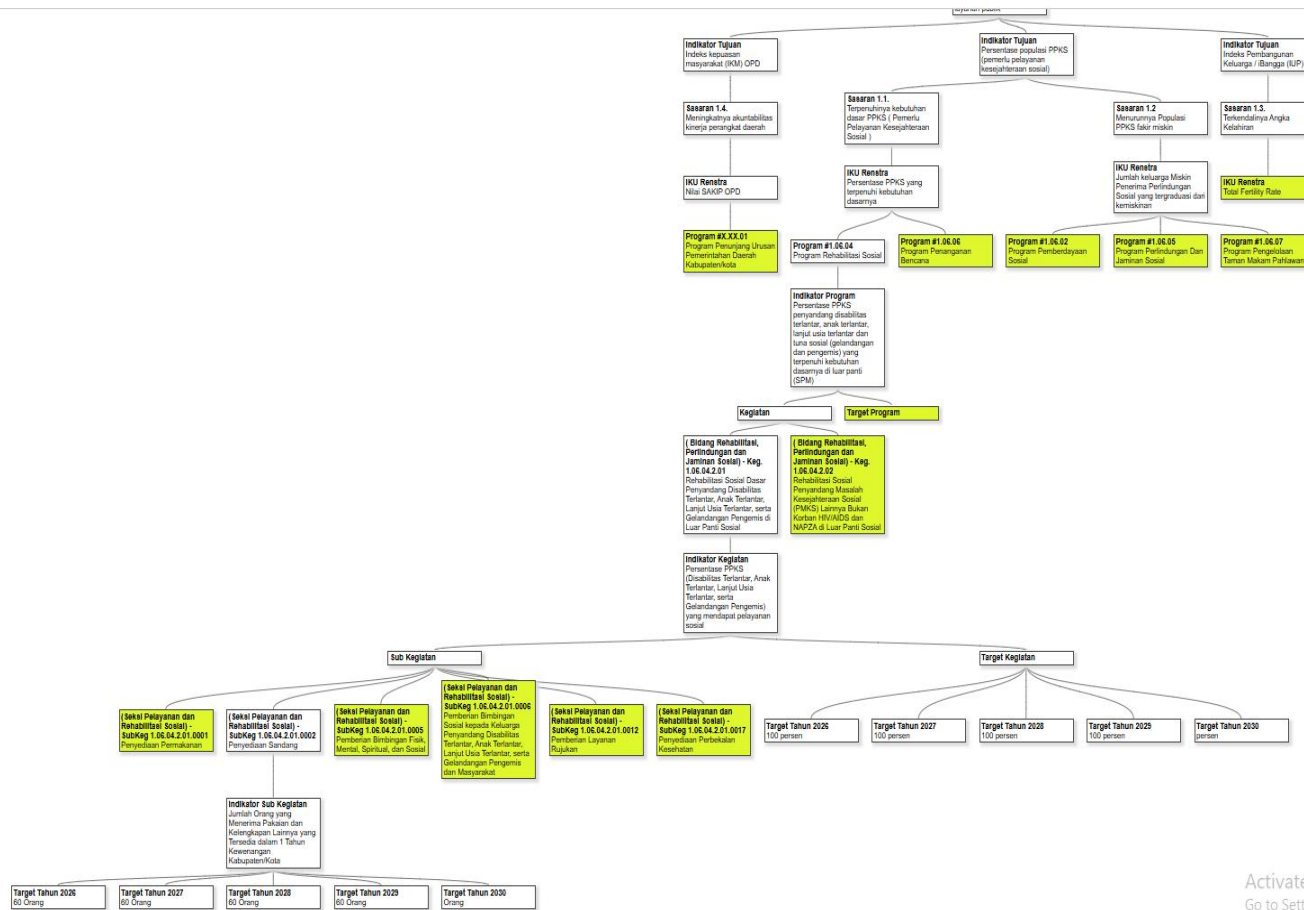
🏠 🔍 ⚙️ Login 🌱 30. DINSOS SK 🔄 Evaluasi Kegiatan -... 📄 Our-Journey.xlsx - G... 🌐 OUR_JOURNEY - Go... 🔄 SPIP MR (RR_RTP) O...

🔖 Semua Bookmark

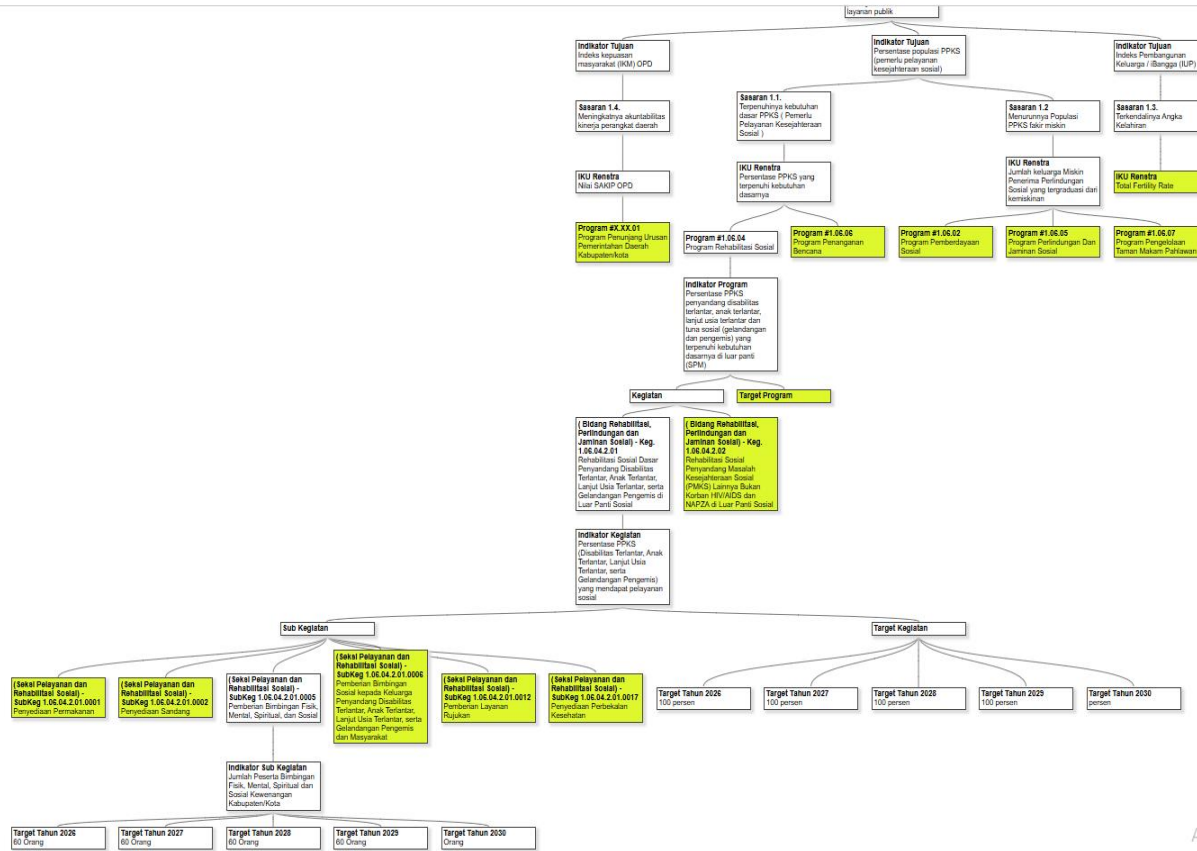


Activate Windows
Go to Settings to activate Windows.

Sub Kegiatan Penyediaan Sandang



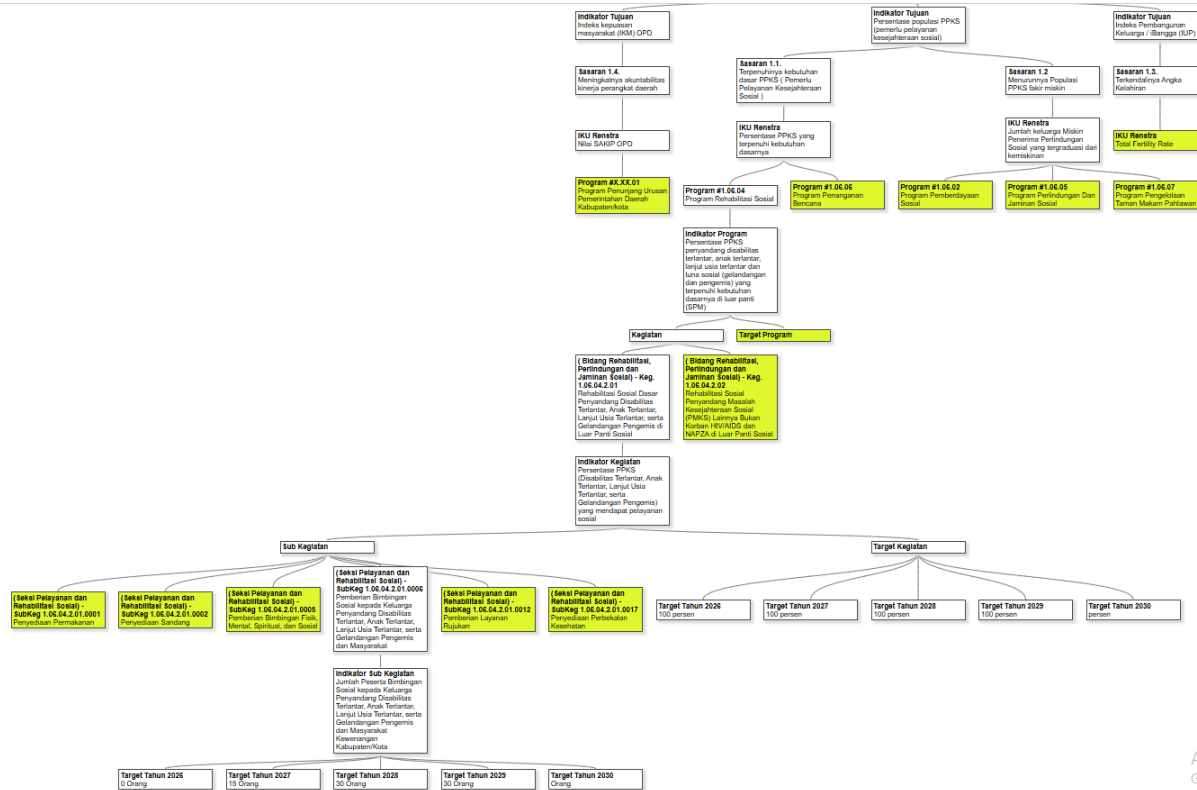
Sub Kegiatan Pemberian Bimbingan Fisik, Mental, Spiritual, dan Sosial



Activate Windows
Go to Settings to activate Windows.

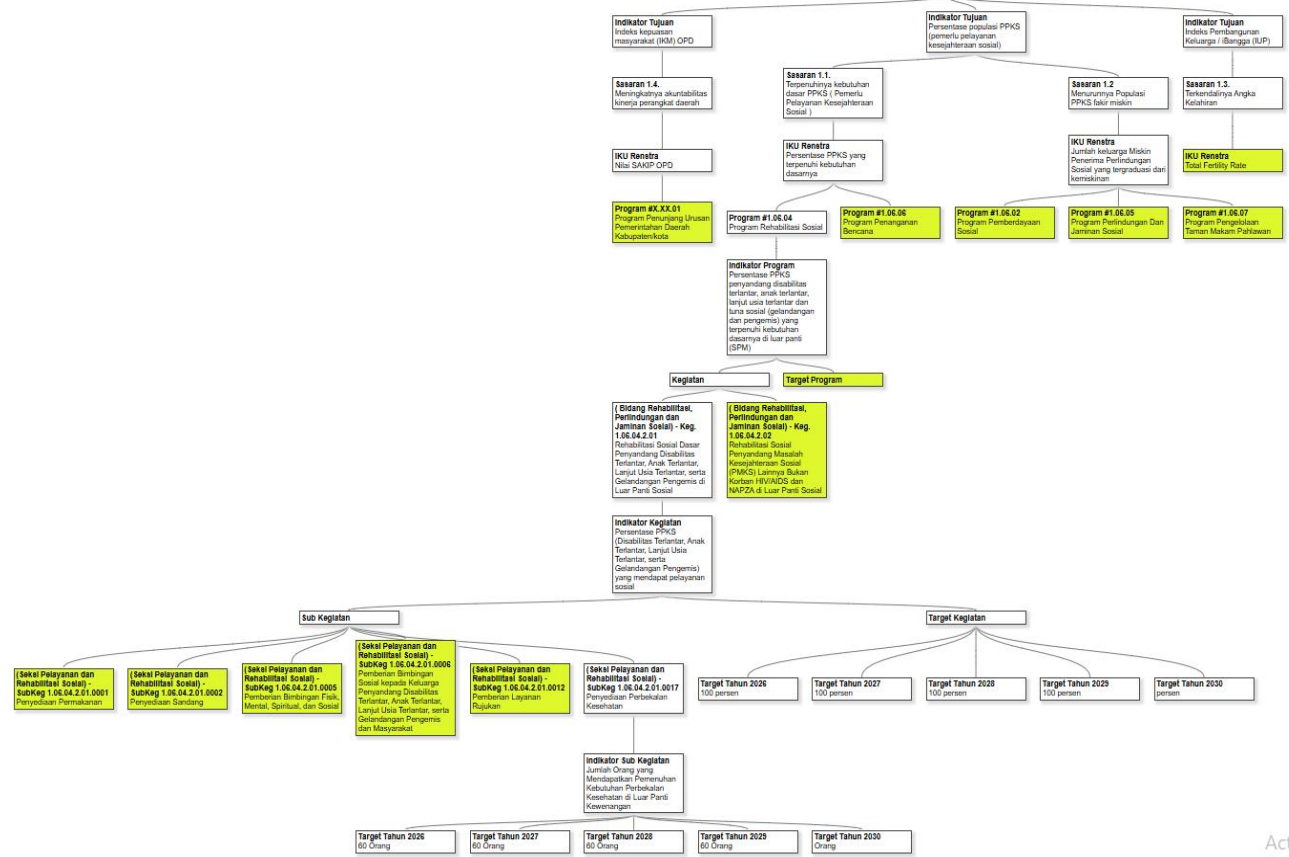
Sub Kegiatan Pemberian Bimbingan Sosial kepada Keluarga Penyandang Disabilitas Terlantar, Anak Terlantar, Lanjut Usia Terlantar, serta Gelandangan Pengemis dan Masyarakat

cascadingkinerja.pekalongankota.go.id/cascadtreeview/view_cascad_full.php

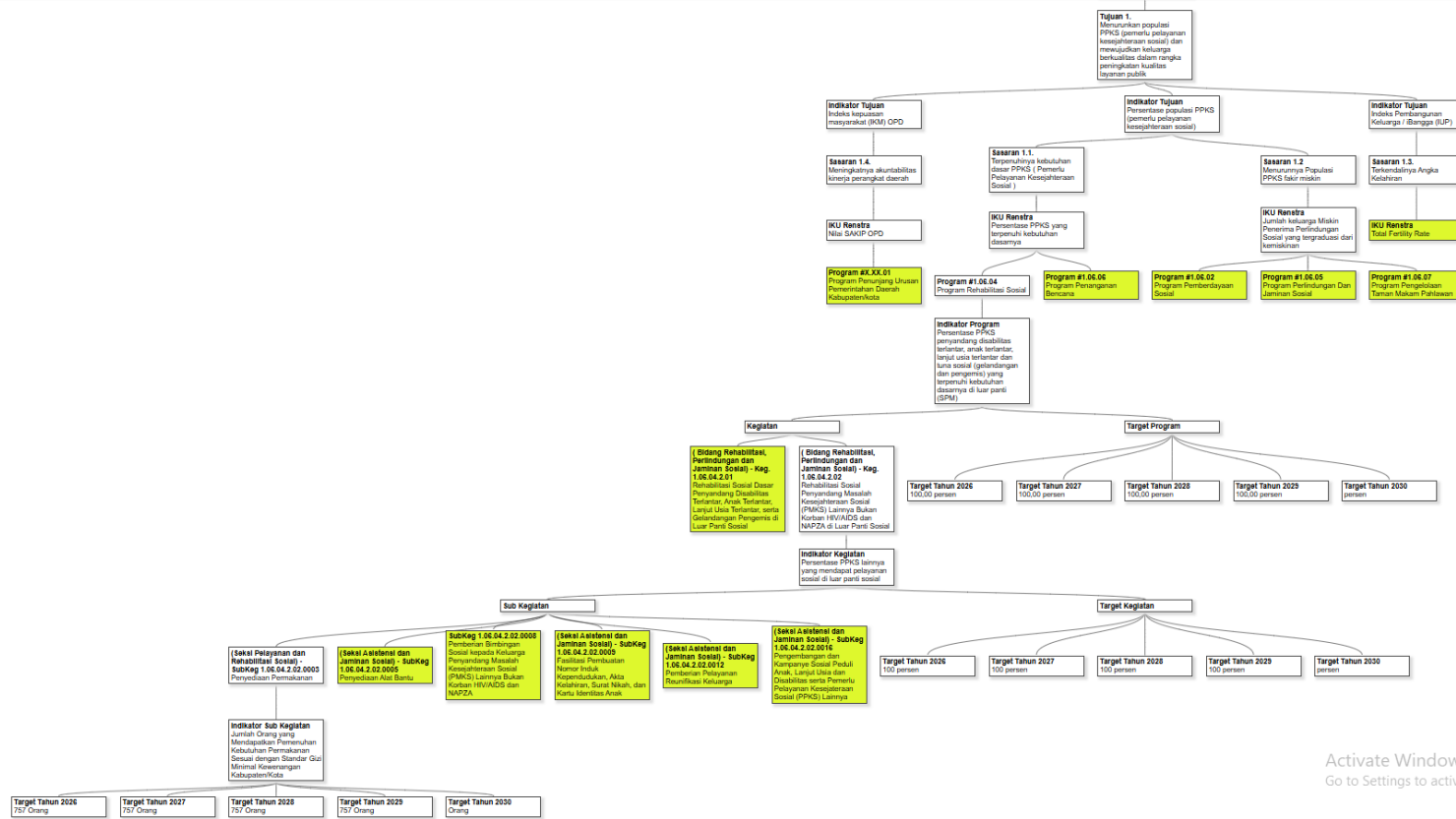


Activate Windows
Go to Settings to activate Windows.

Sub Kegiatan Penyediaan Perbekalan Kesehatan

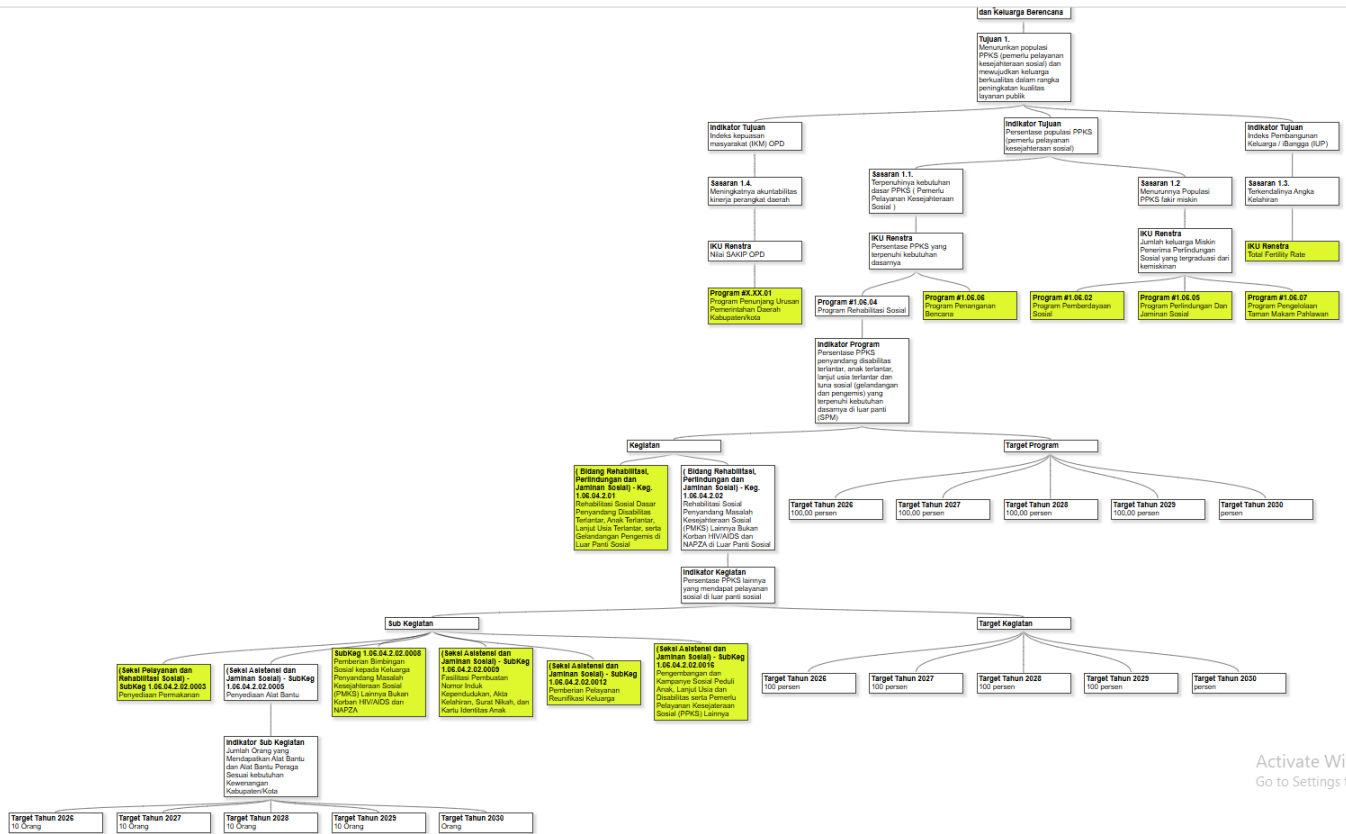


Sub Kegiatan Permakanan



Activate Windows
Go to Settings to activate Windows.

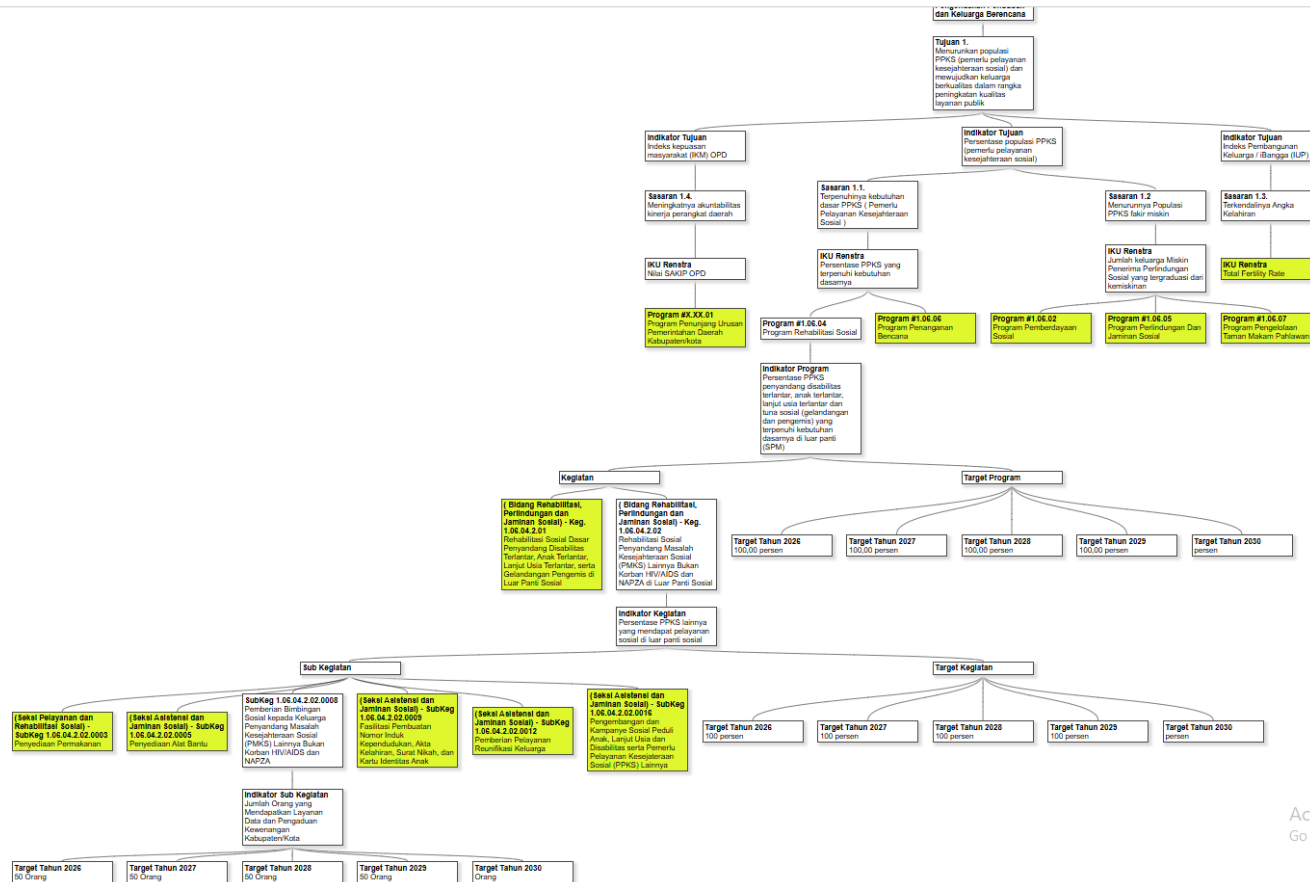
Sub Kegiatan Penyediaan Alat Bantu



Activate Windows
Go to Settings to activate Windows.

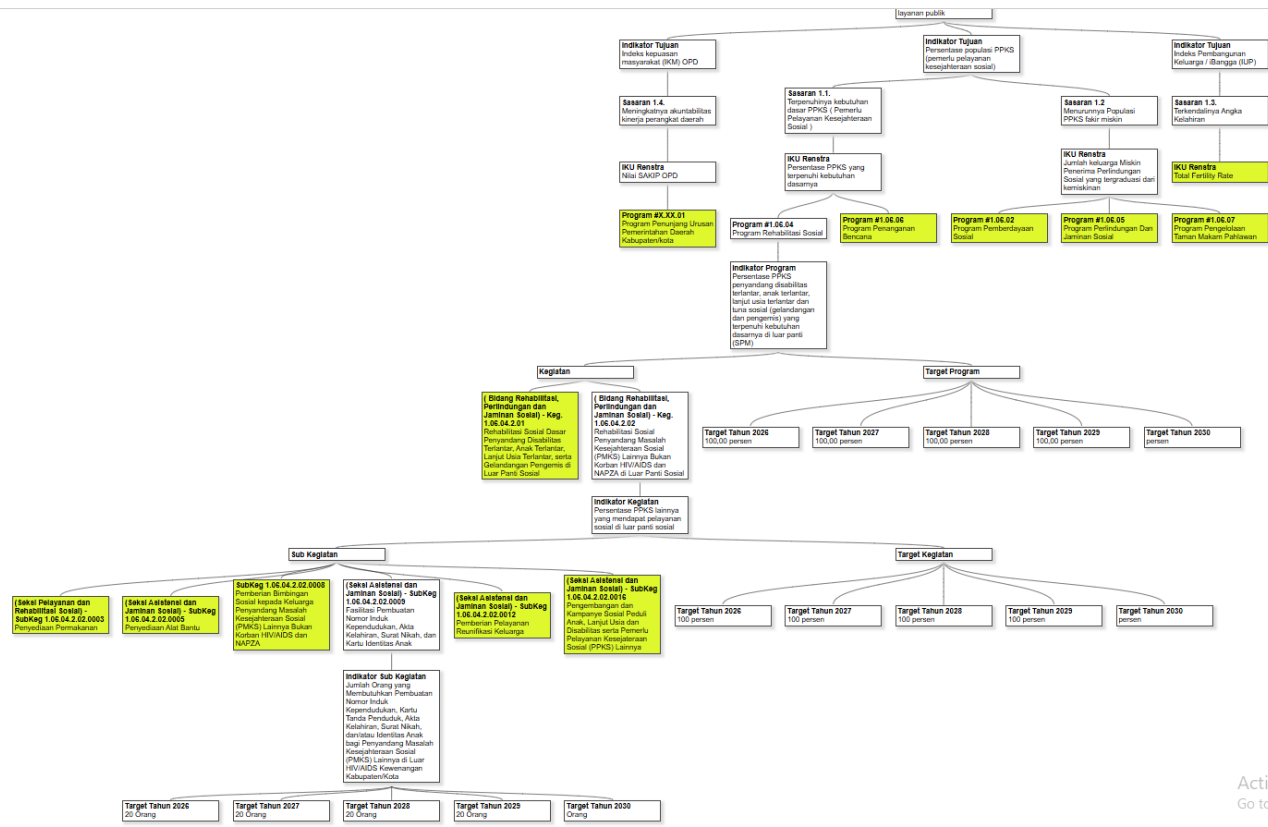
Sub Kegiatan

Pemberian Bimbingan Sosial kepada Keluarga Penyandang Masalah Kesejahteraan Sosial (PMKS) Lainnya Bukan Korban HIV/AIDS dan NAPZA



Activate Windows
Go to Settings to activate Windows.

Sub Kegiatan fasilitasi Pembuatan Nomor Induk Kependudukan, Akta Kelahiran, Surat Nikah, dan kartu Identitas Anak



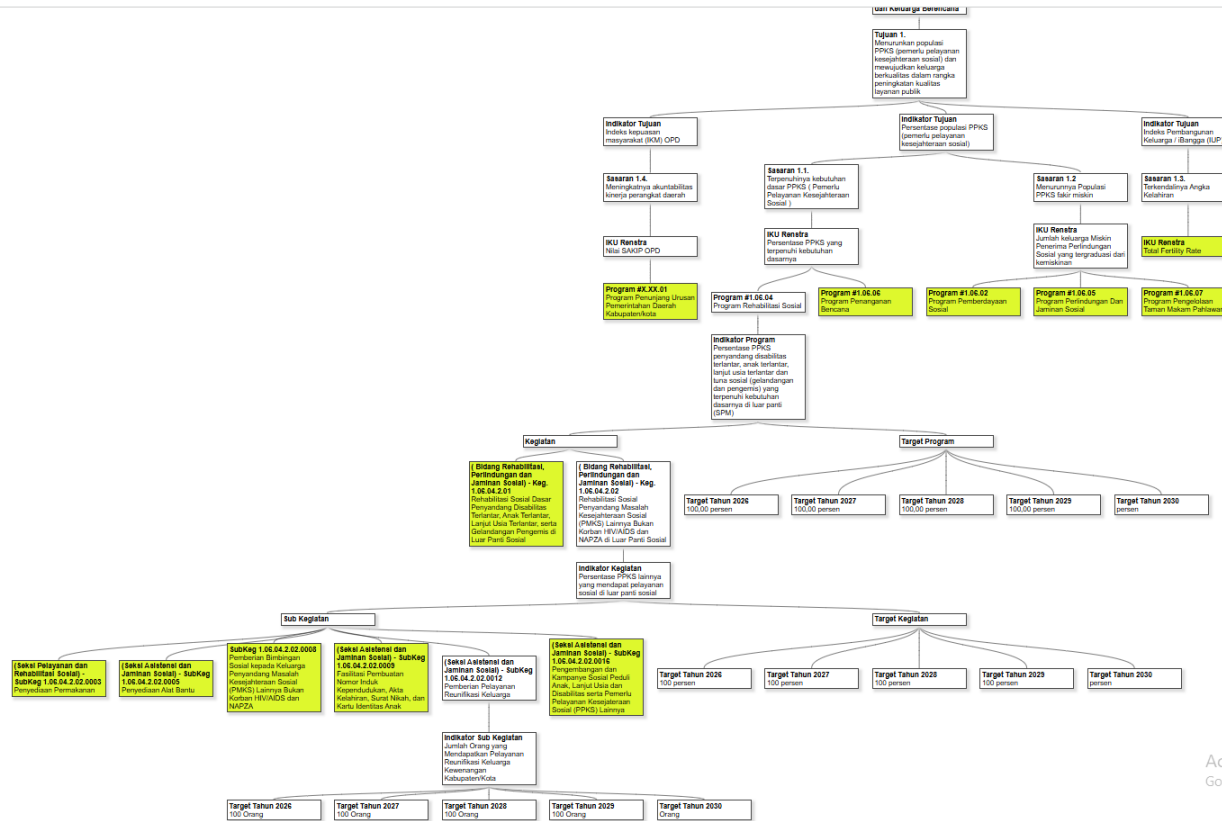
Activate Windows
Go to Settings to activate Windows.

Sub Kegiatan Pemberian Pelayanan Reunifikasi Keluarga

cascadingkinerja.pekalongankota.go.id/cascadtreeview/view_cascad_full.php

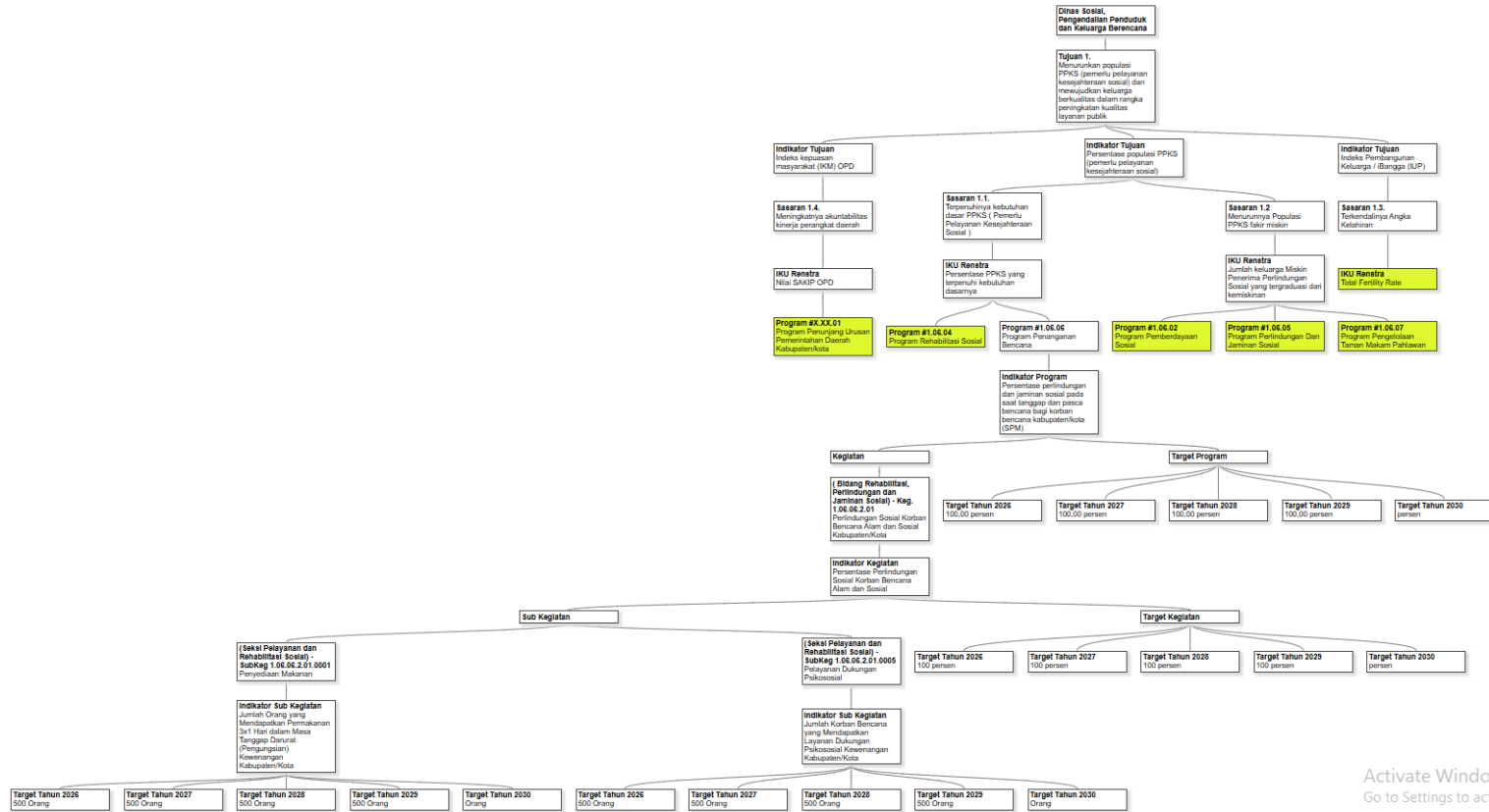
Login 30. DINSOS SK Evaluasi Kegiatan ... Our-Journeys.xlsx - G... OUR_JOURNEY - Go... SPIP MR (RR_RTP) O...

Semua Bookmark



Activate Windows
Go to Settings to activate Windows.

Sub Kegiatan Penyediaan Makanan dan Pelayanan Dukungan Psikososial

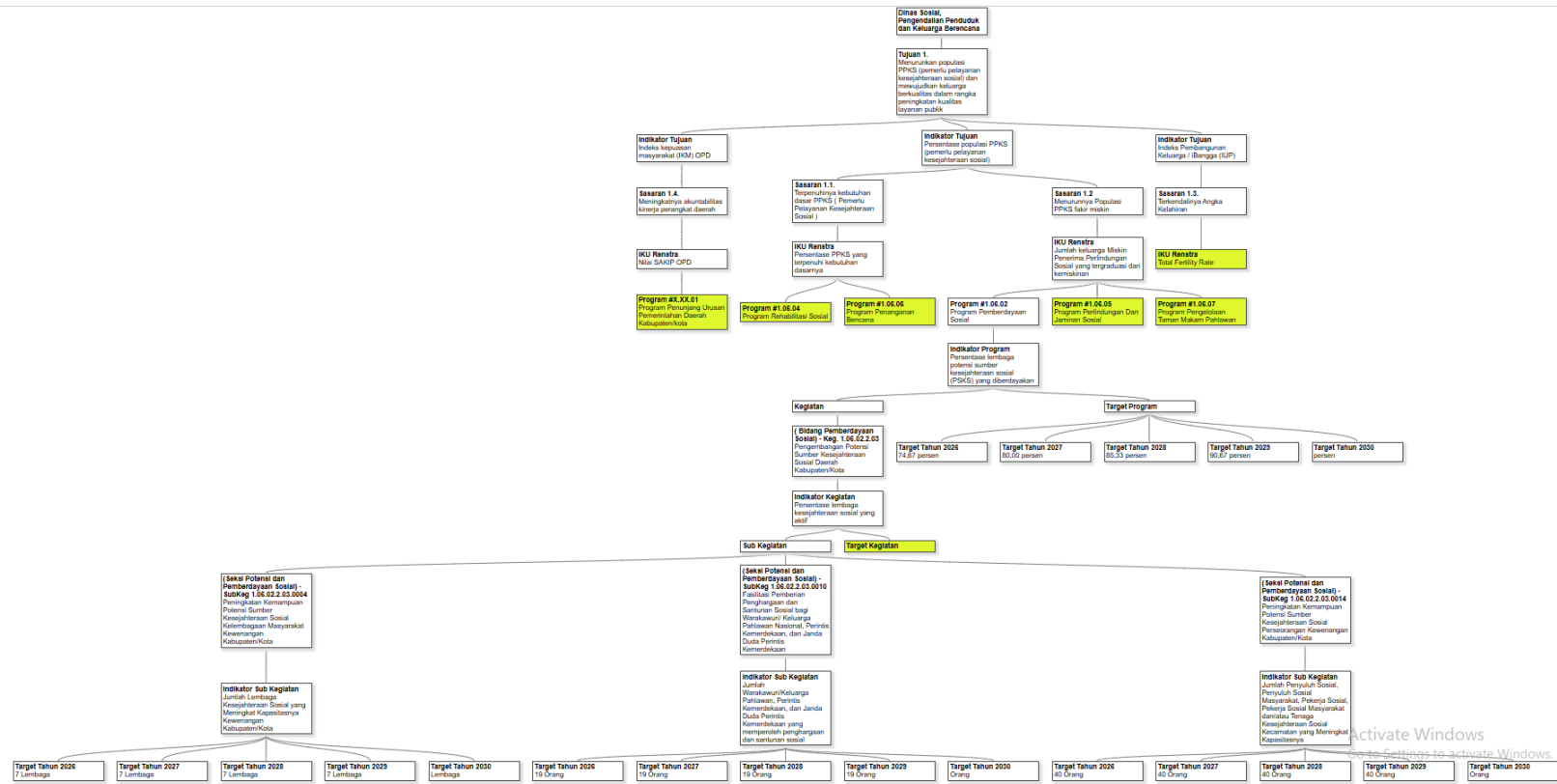


Sub Kegiatan

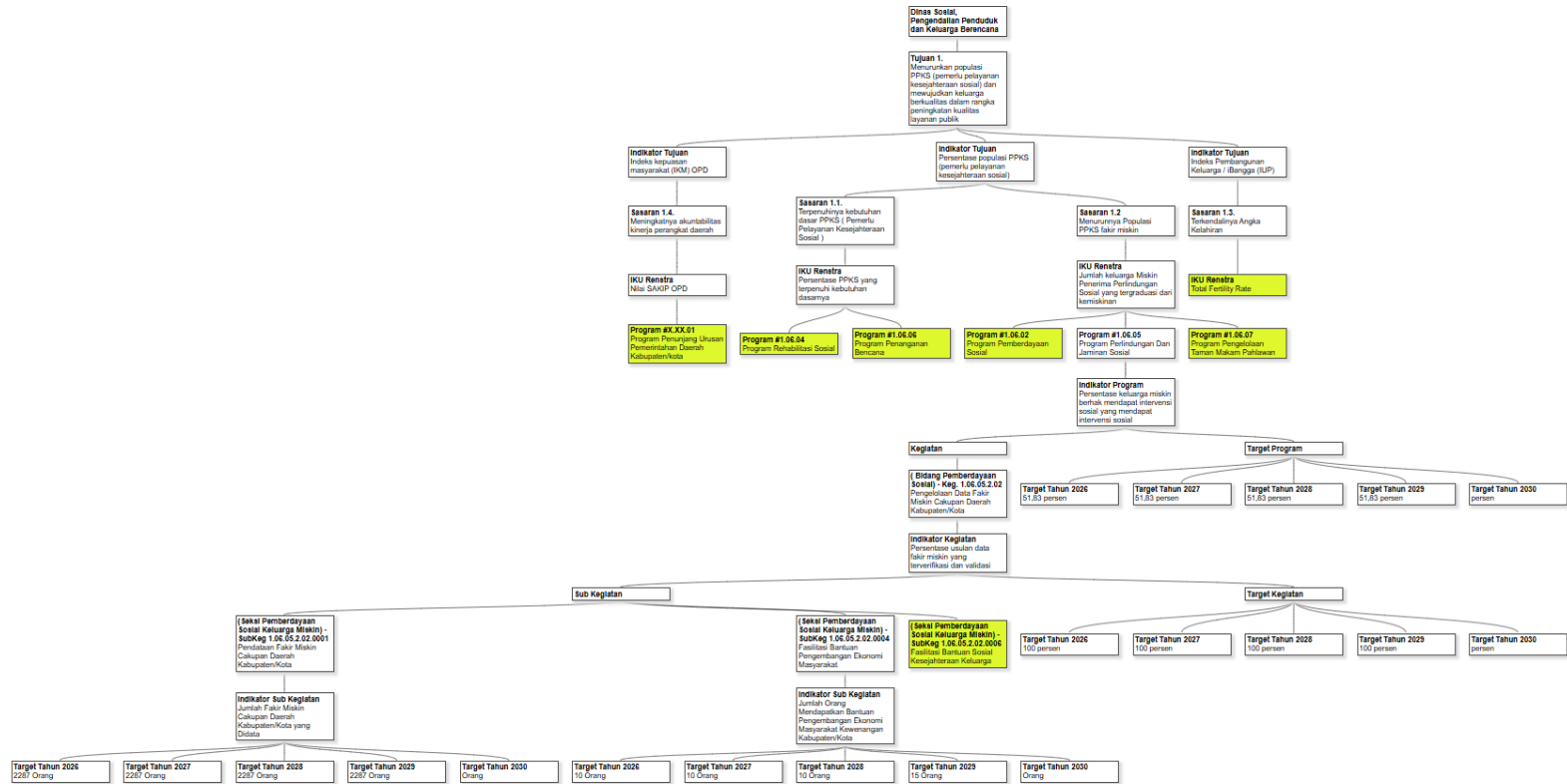
Peningkatan Kemampuan PSKS Kelembagaan Masyarakat Kewenangan Kab/Kota.

Fasilitasi Pemberian, Penghargaan dan Santunan Sosial bagi Warakawuri/Keluarga Pahlawan Nasional, Perintis Kemerdekaan dan Janda Duda, Perintis Kemerdekaan.

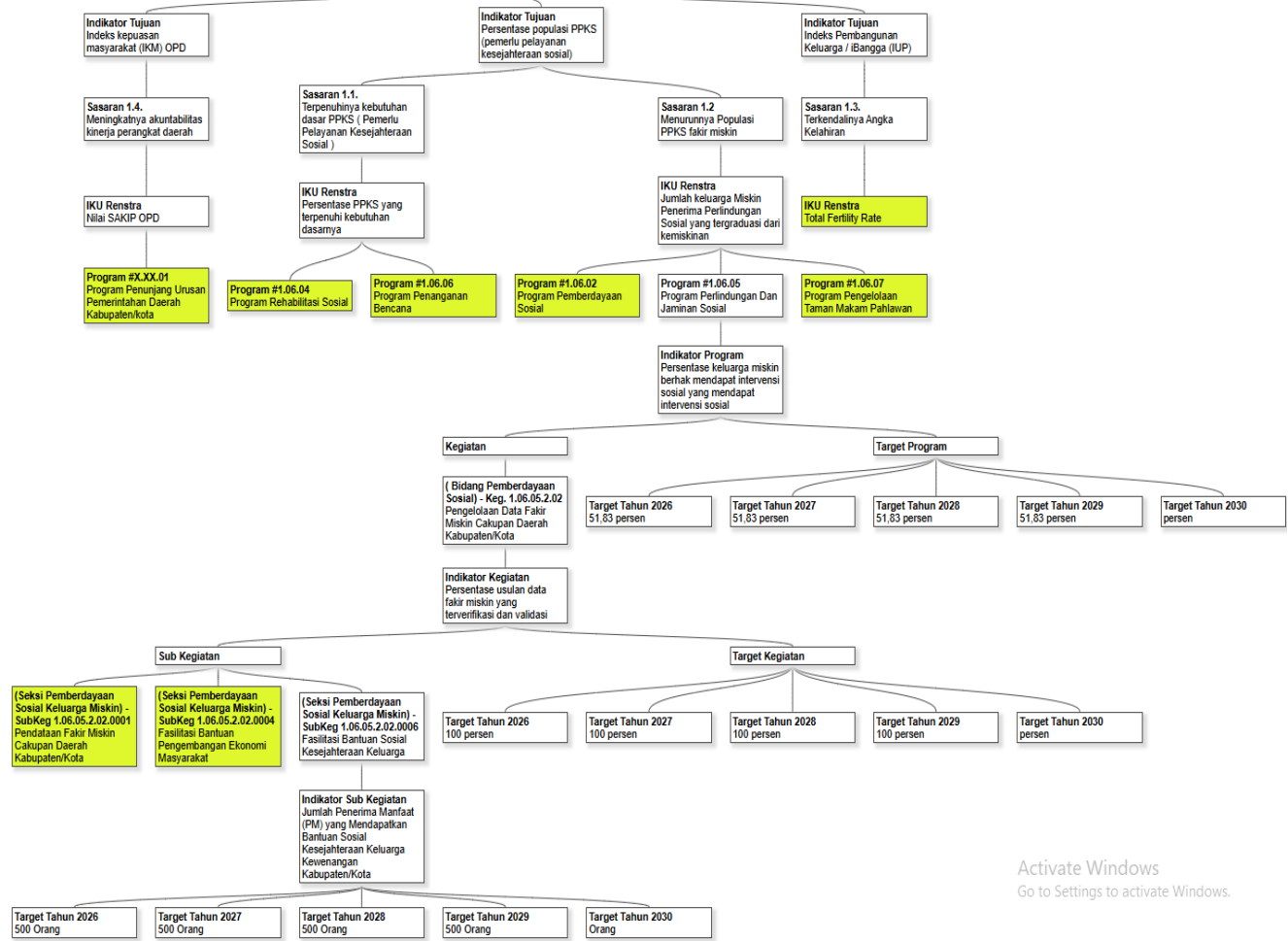
Peningkatan kemampuan PSKS Perseorangan Kewenangan Kab/Kota.



Sub Kegiatan Pendataan Fakir Miskin Cakupan Daerah dan Fasilitas Bantuan Pengembangan Ekonomi Masyarakat

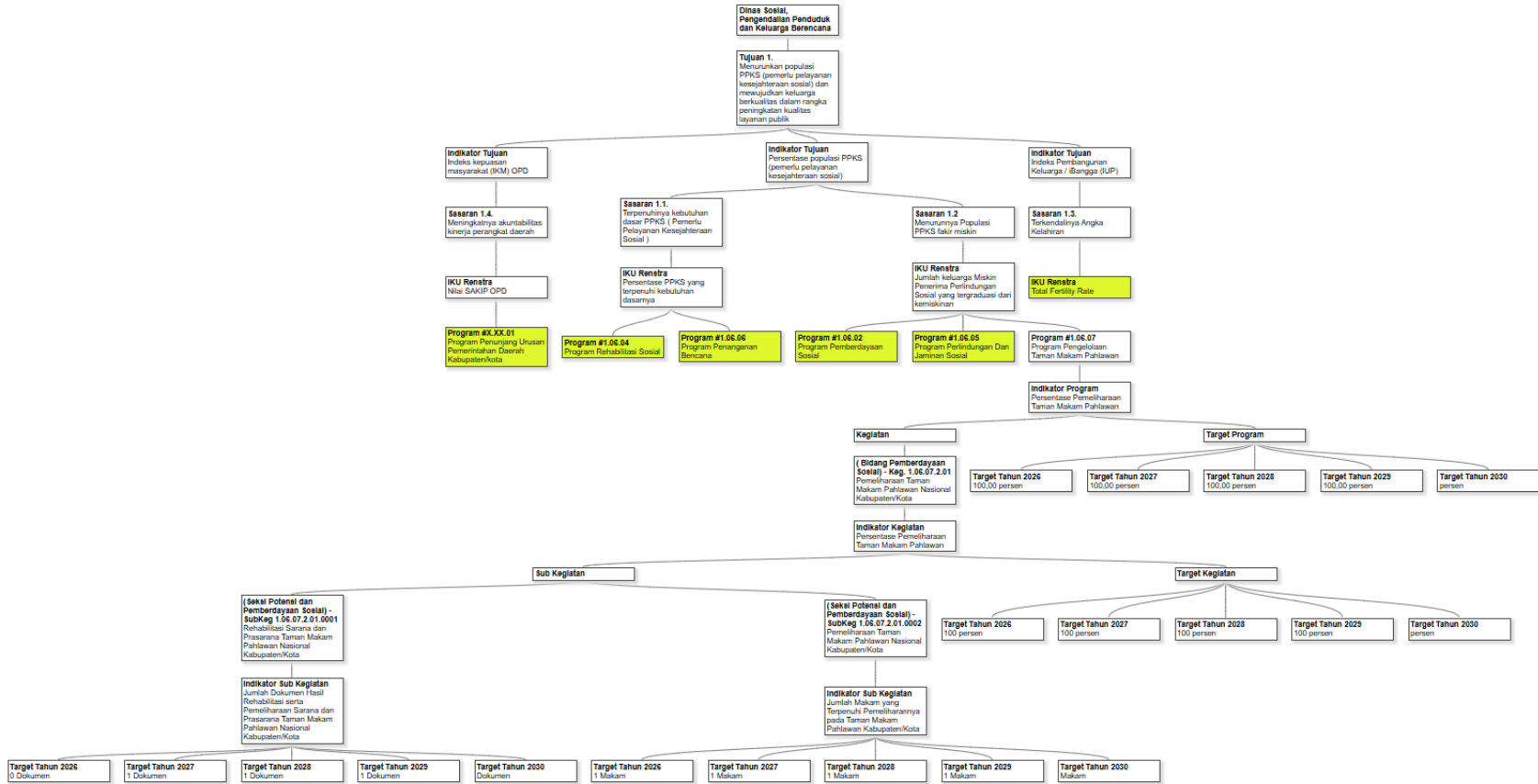


Sub Kegiatan Fasilitas Bantuan Sosial Kesejahteraan Keluarga

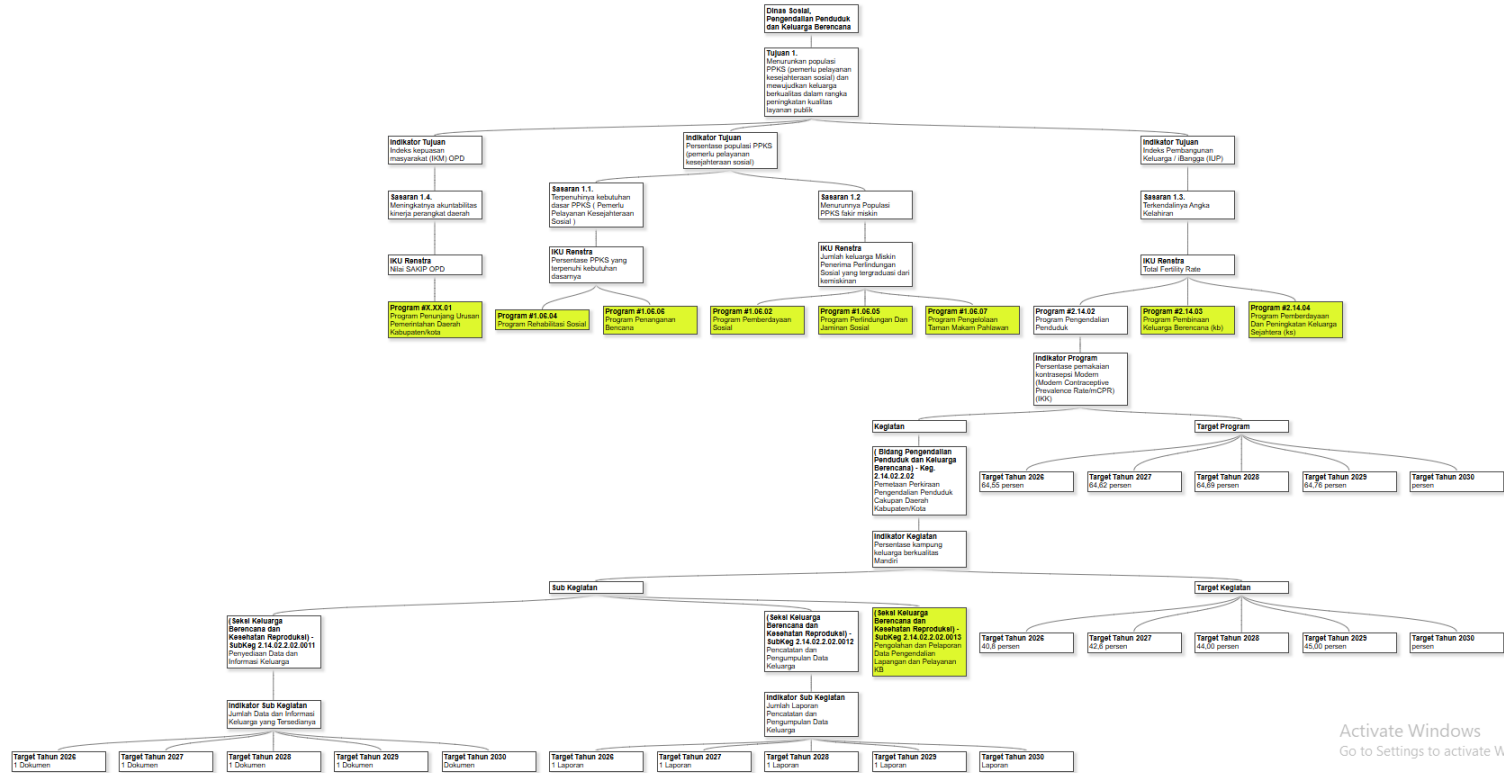


Activate Windows
 Go to Settings to activate Windows.

Sub Kegiatan Rehabilitasi Sarana dan Prasarana TMPN Kab/Kota dan Pemeliharaan TMPN Kab/Kota

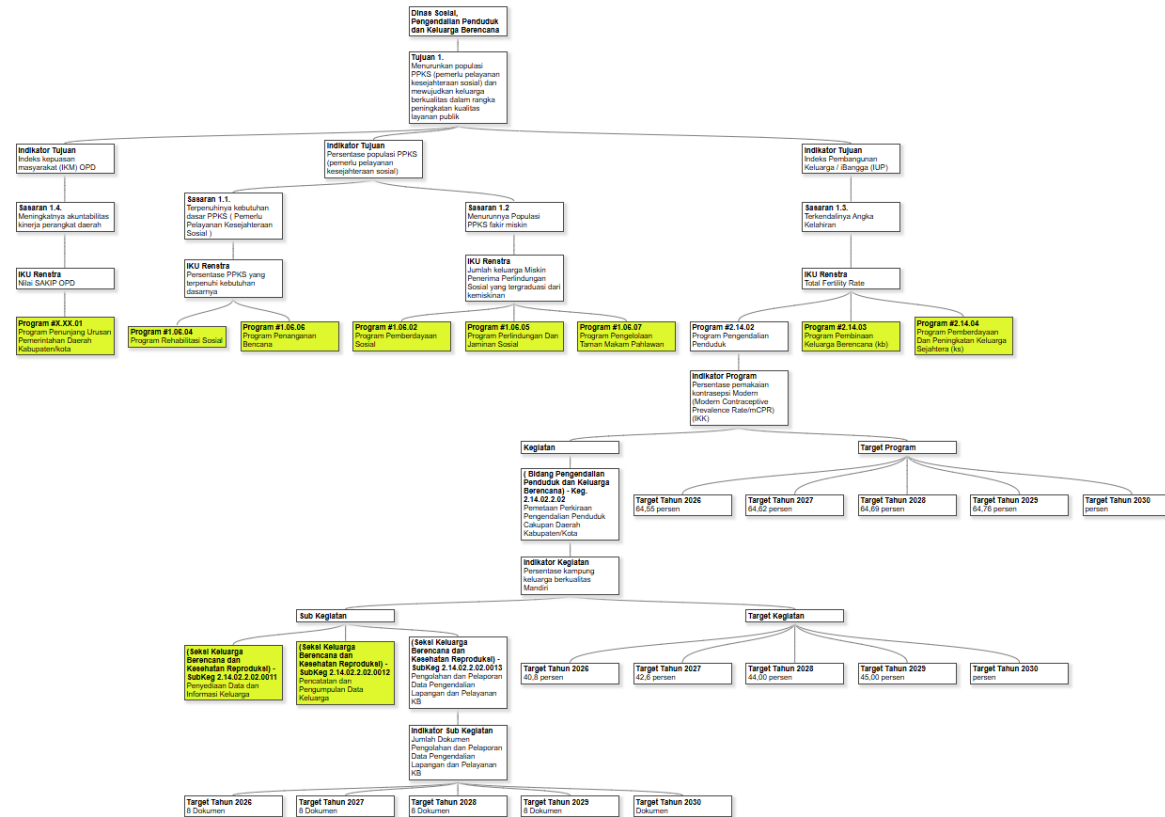


Sub Kegiatan Penyediaan Data dan Informasi Keluarga dan Sub Kegiatan Pencatatan dan Pengumpulan Data Keluarga

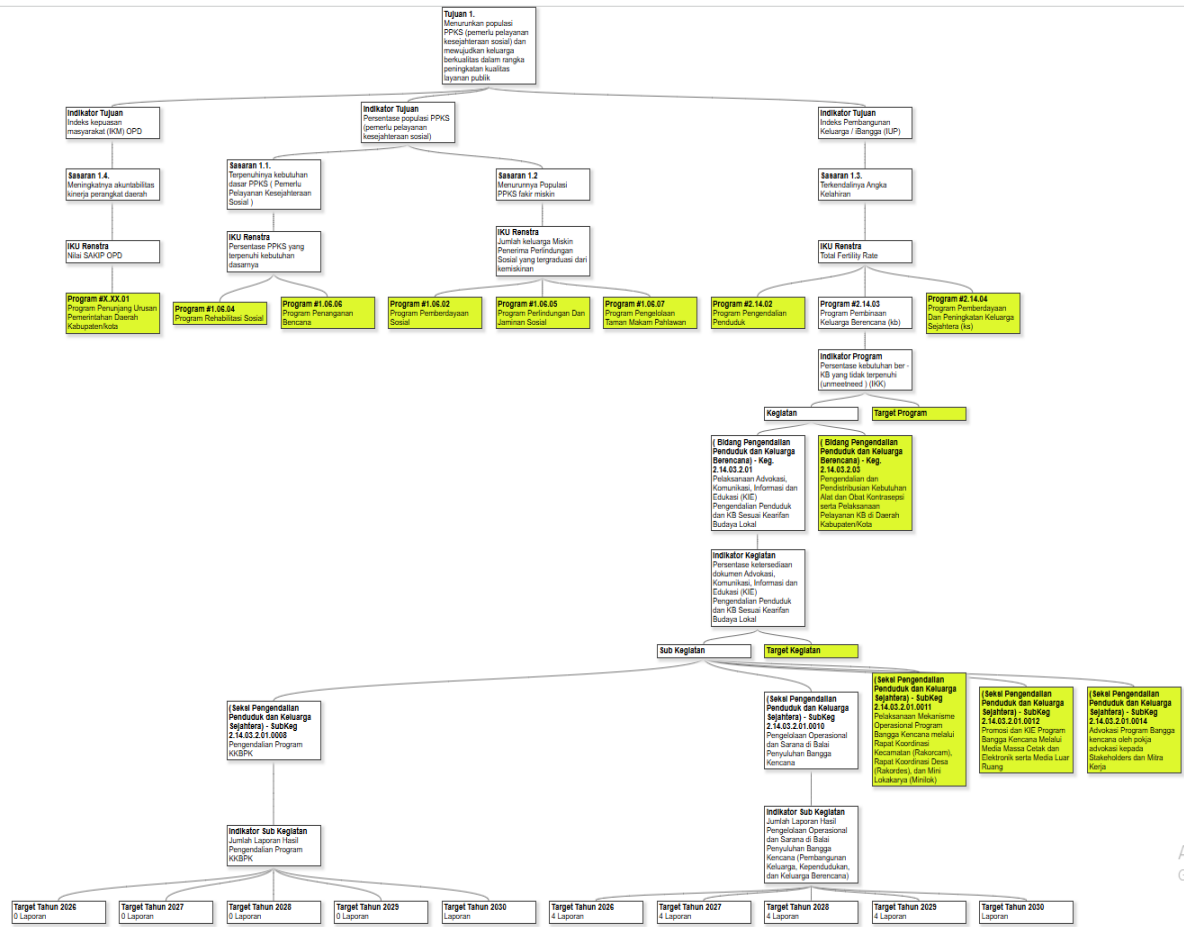


Activate Windows
Go to Settings to activate Windows.

Sub Kegiatan Pengolahan dan Pelaporan Data Pengendalian Lapangan dan Pelayanan KB

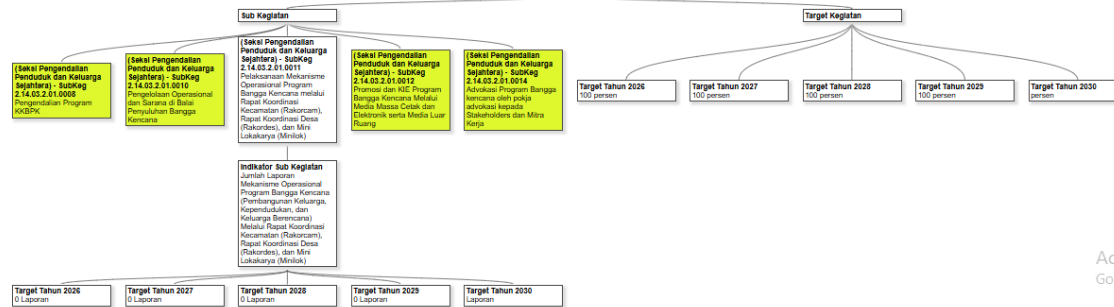
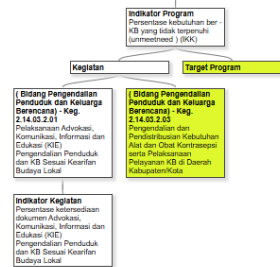
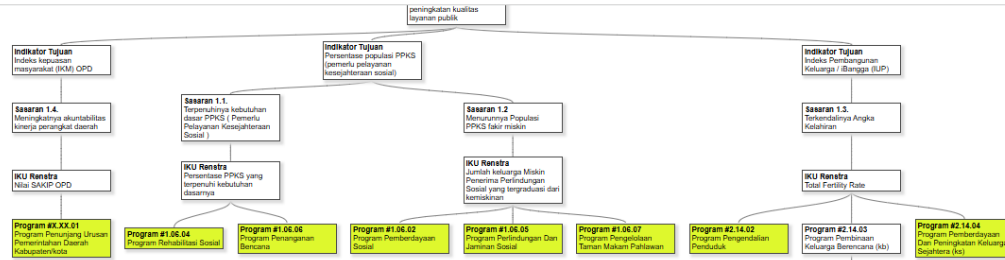


Sub Kegiatan Pengendalian Program KKBPK dan Sub Kegiatan Pengelolaan Operasional dan Sarana di Balai Penyuluhan Bangsa Kencana

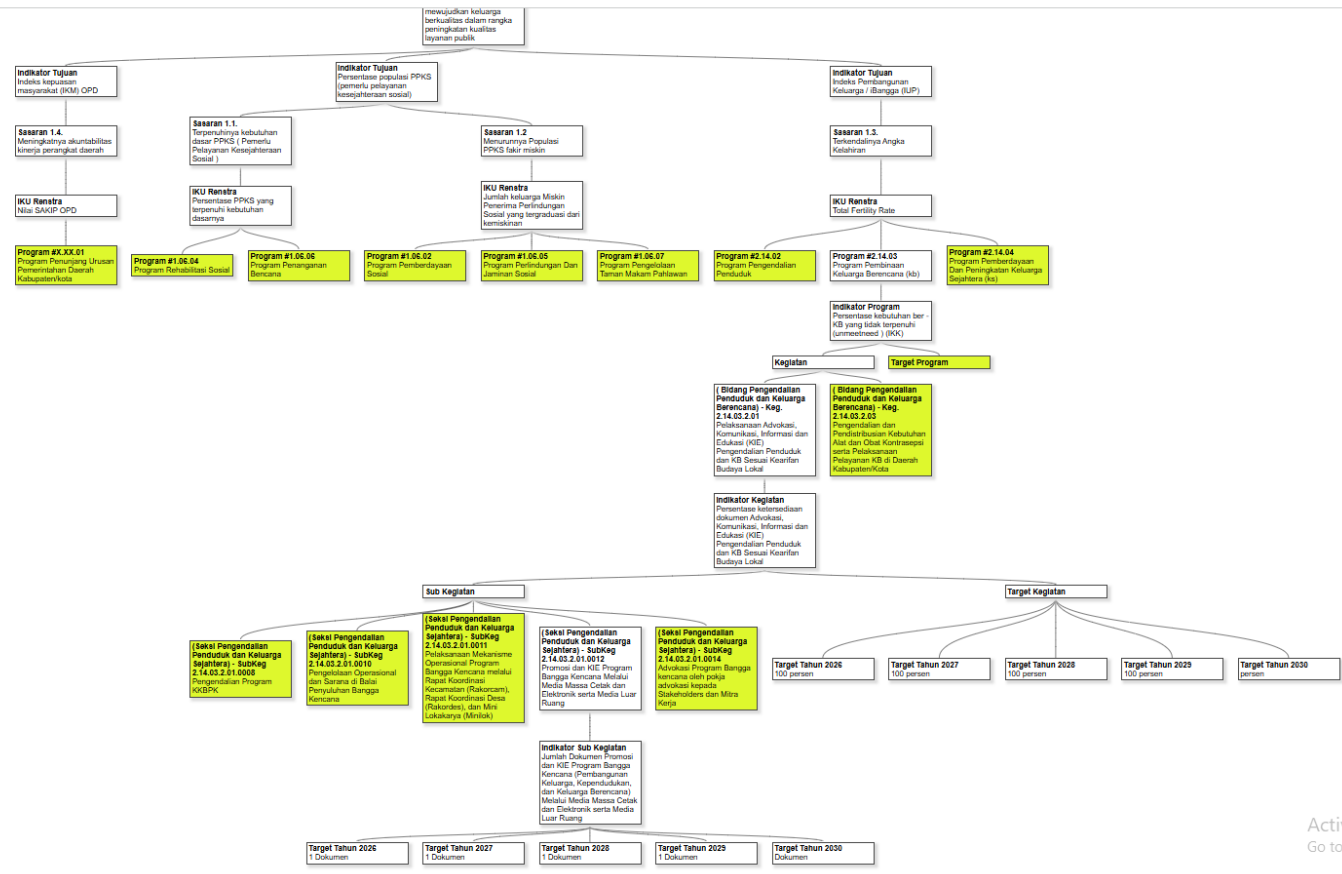


Activate Windows
Go to Settings to activate Windows.

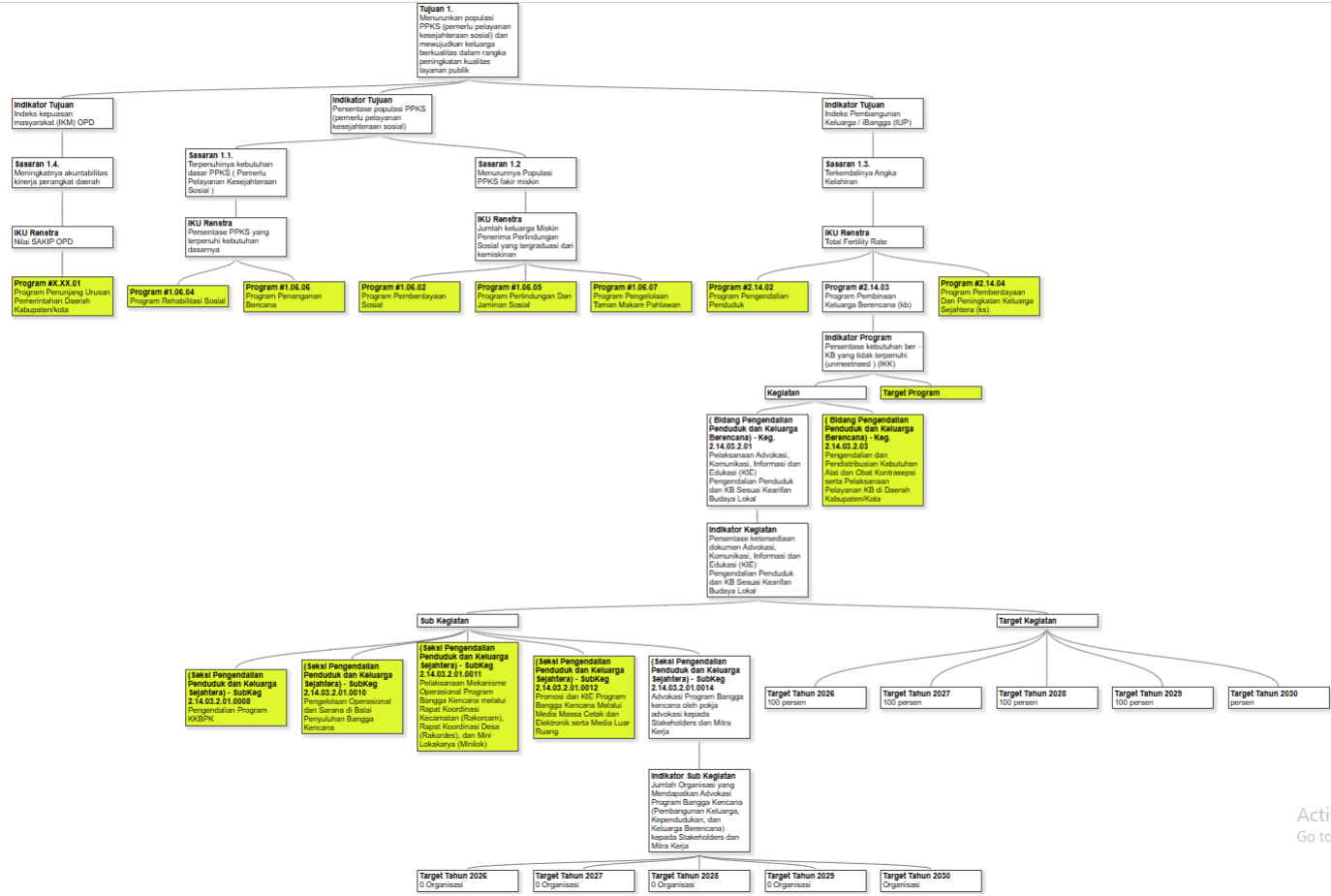
Sub Kegiatan Pelaksanaan Mekanisme Operasional Program Bangga Kencana (Pembangunan Keluarga, Kependudukan dan Keluarga Berencana) Melalui Rapat Koordinasi Kecamatan (Rakorcam), Rapat Koordinasi Desa (Rakordes), dan Mini Lokakarya (Monolok)



Sub Kegiatan Promosi dan KIE Program Bangga Kencana Melalui Media Massa Cetak dan Elektronik serta Media Luar Ruang

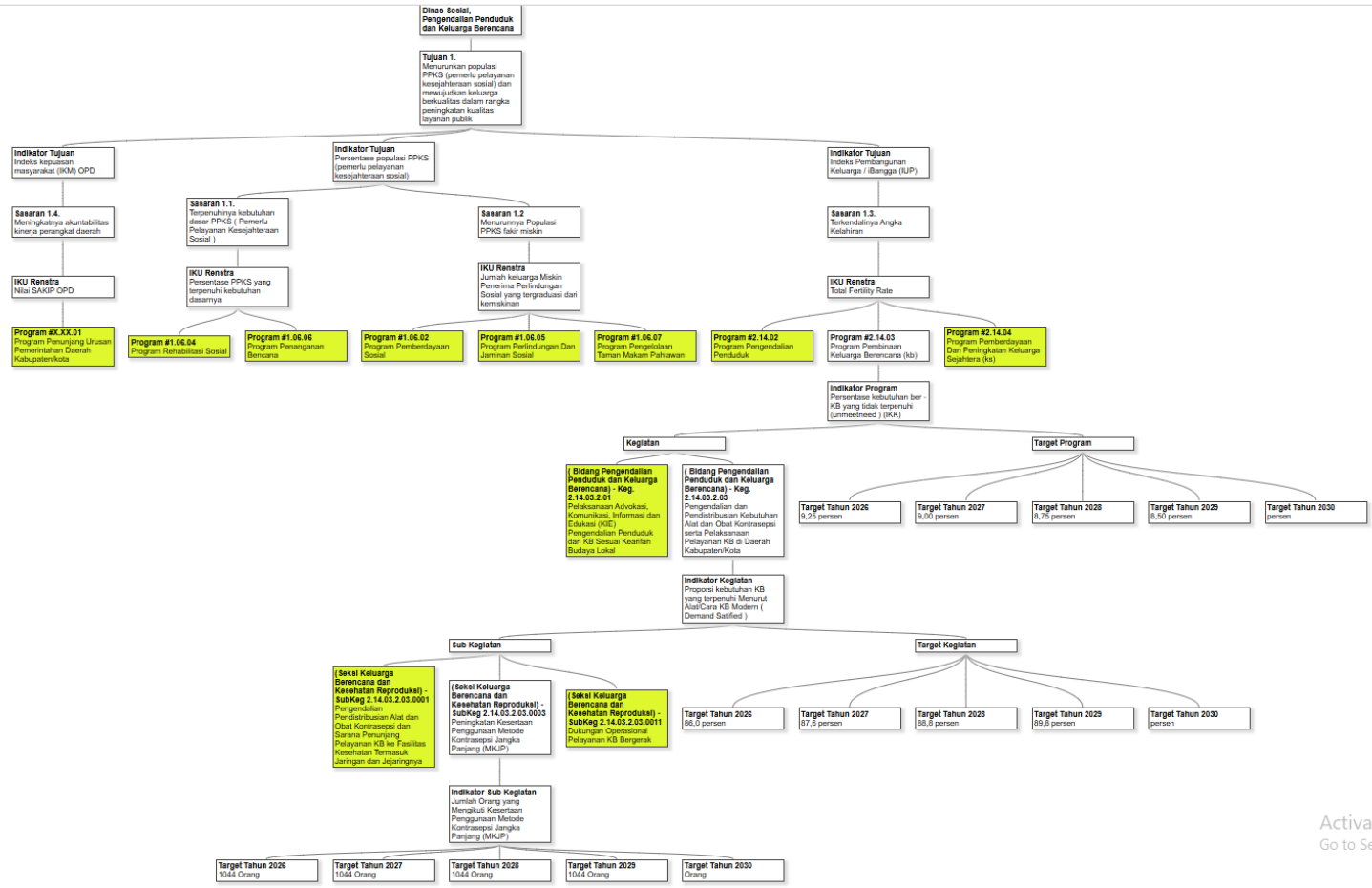


Sub Kegiatan Advokasi Program, Bangga Kencana Oleh Pokja Advokasi Kepada Stakeholders dan Mitra Kerja

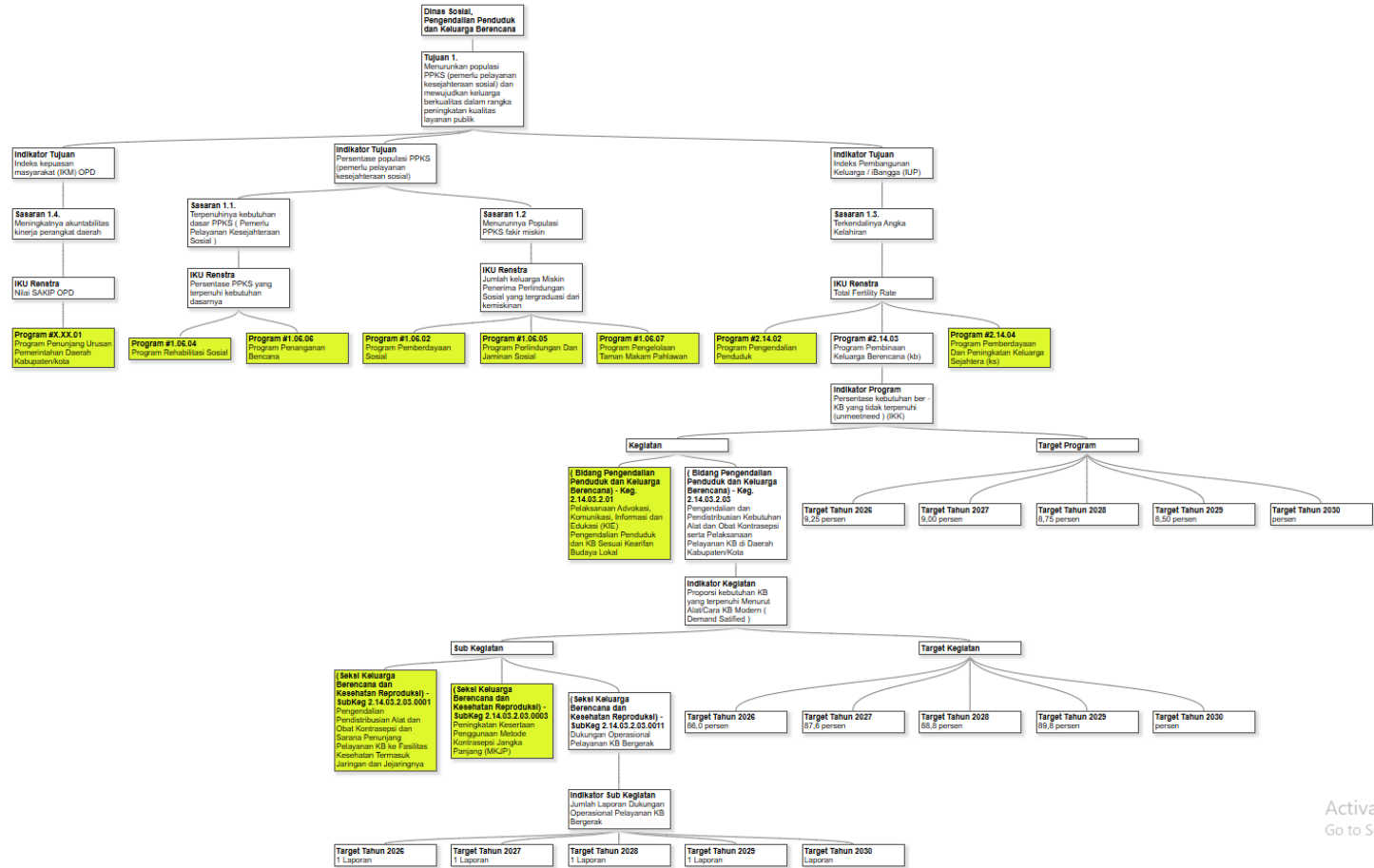


Activate Windows
Go to Settings to activate Windows.

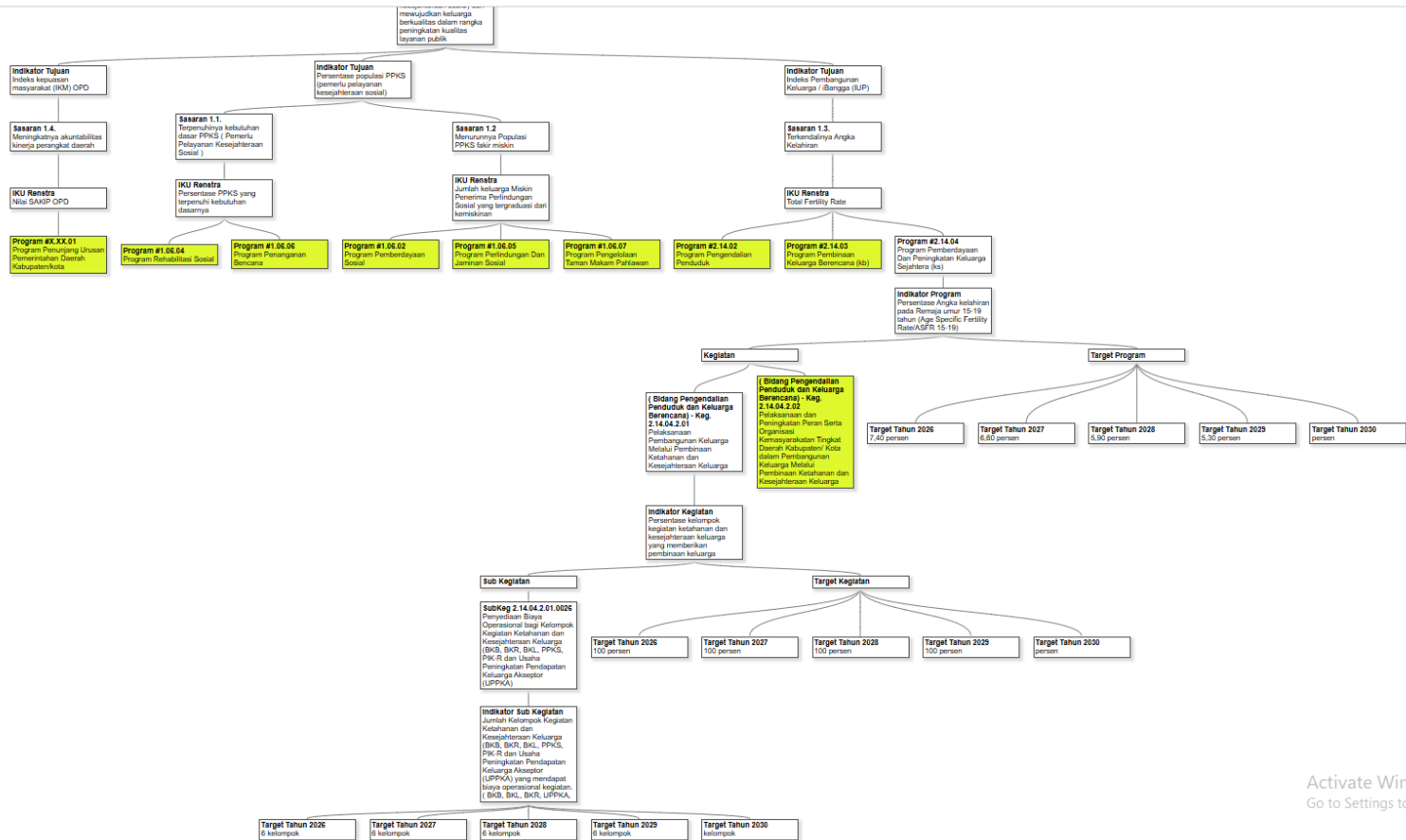
Sub Kegiatan Peningkatan Kesertaan Penggunaan MKJP



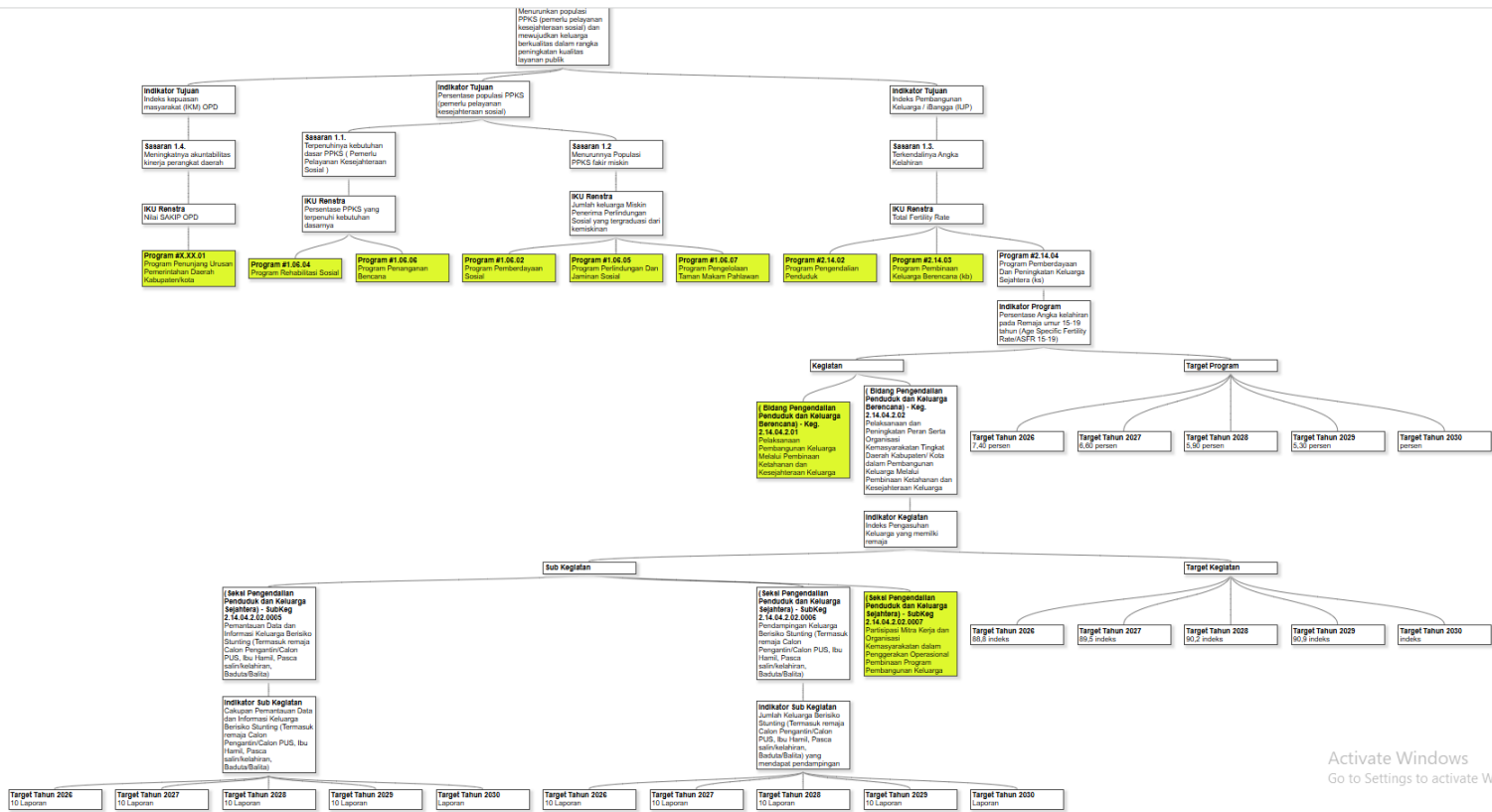
Sub Kegiatan Dukungan Operasional Pelayanan KB Bergerak



Sub Kegiatan Penyediaan Biaya Operasional bagi Kelompok Kegiatan Ketahanan dan Kesejahteraan Keluarga (BKB, BKR, BKL, PPKS, PIK-R, dan Usaha Peningkatan Pendapatan Keluarga (UPPKA))

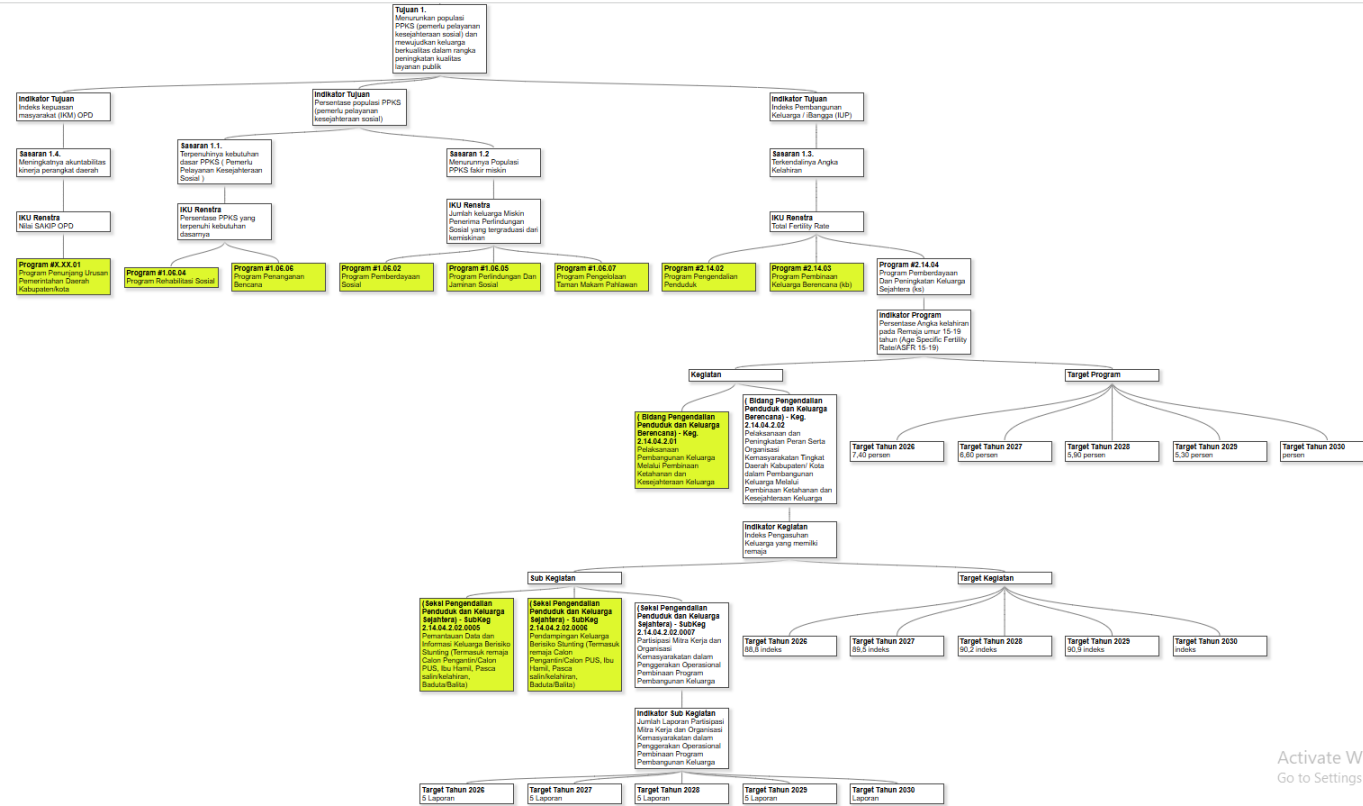


Sub Kegiatan Pemantauan Data dan Informasi Keluarga Berisiko Stunting dan Pendampingan Keluarga Berisiko Stunting



Activate Windows
Go to Settings to activate Windows.

Suh Kegiatan Partisipasi Mitra Kerja dan Organisasi Kemasyarakatan dalam Penggerakan Operasional Pembinaan Program Pembangunan Keluarga



Activate Windows
Go to Settings to activate W